

human CD2 Mouse mAb

Catalog Number: bsm-30002M

Target Protein: human CD2

Concentration: 1mg/ml

Form: Liquid

Host: Mouse

Clonality: Monoclonal

Clone No.: 2F4

Isotype: Mouse IgG1, k

Applications: WB (1:500-2000)

Reactivity: Human

Predicted MW: 37 kDa

Detected MW: 50 kDa

Entrez Gene: 914

Swiss Prot: P06729

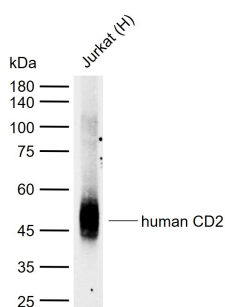
Purification: affinity purified by Protein G

Storage: 0.01M TBS (pH7.4).

Shipped at 4°C. Store at -20°C for one year. Avoid repeated freeze/thaw cycles.

Background: The protein encoded by this gene is a surface antigen found on all peripheral blood T-cells. The encoded protein interacts with LFA3 (CD58) on antigen presenting cells to optimize immune recognition. A locus control region (LCR) has been found in the 3' flanking sequence of this gene. [provided by RefSeq, Jun 2016]

VALIDATION IMAGES



Sample: Lane 1: Human Jurkat cell lysates Primary: Anti-human CD2 (bsm-30002M) at 1/1000 dilution
Secondary: IRDye800CW Goat Anti-Mouse IgG at 1/20000 dilution Predicted band size: 37 kDa Observed band size: 50 kDa