

bs-3000R**[Primary Antibody]****BioSS**
ANTIBODIES

www.bioss.com.cn

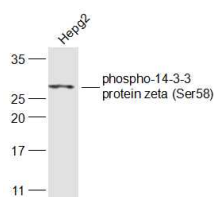
sales@bioss.com.cn

techsupport@bioss.com.cn

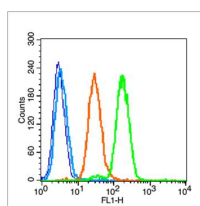
400-901-9800

phospho-14-3-3 protein zeta (Ser58) Rabbit pAb**— DATASHEET —**

Host: Rabbit	Isotype: IgG	Applications: WB (1:500-2000) Flow-Cyt (1µg /test)
Clonality: Polyclonal		
GeneID: 7529	SWISS: P31946	Reactivity: Human (predicted: Mouse, Rat, Rabbit, Cow, Chicken, Dog, Horse)
Target: 14-3-3 protein zeta (Ser58)		
Immunogen: KLH conjugated Synthesised phosphopeptide derived from human 14-3-3 protein zeta/delta around the phosphorylation site of Ser58: RS(p-S)WR.		Predicted MW.: 27 kDa
Purification: affinity purified by Protein A		Subcellular Location: Cytoplasm
Concentration: 1mg/ml		
Storage: 0.01M TBS (pH7.4) with 1% BSA, 0.02% Proclin300 and 50% Glycerol. Shipped at 4°C. Store at -20°C for one year. Avoid repeated freeze/thaw cycles.		
Background: Adapter protein implicated in the regulation of a large spectrum of both general and specialized signaling pathways. Binds to a large number of partners, usually by recognition of a phosphoserine or phosphothreonine motif. Binding generally results in the modulation of the activity of the binding partner.		

— VALIDATION IMAGES —

Sample: HepG2(Human) Cell Lysate at 30 ug
Primary: Anti-phospho-14-3-3 protein zeta (Ser58) (bs-3000R) at 1/300 dilution Secondary: IRDye800CW Goat Anti-Rabbit IgG at 1/20000 dilution Predicted band size: 27 kD Observed band size: 27 kD



Blank control (blue line): A549 (fixed with 70% ethanol (Overnight at 4°C) and then permeabilized with 0.1% PBS-Tween for 20 min at room temperature). Primary Antibody (green line): Rabbit Anti-phospho-14-3-3 protein zeta + delta (Ser58) antibody (bs-3000R), Dilution: 1µg /10⁶ cells; Isotype Control Antibody (orange line): Rabbit IgG . Secondary Antibody (white blue line): Goat anti-rabbit IgG-FITC, Dilution: 1µg /test.