

**bs-8174R**

**[ Primary Antibody ]**

## HLX1 Rabbit pAb

**Bioss**  
ANTIBODIES

www.bioss.com.cn

sales@bioss.com.cn

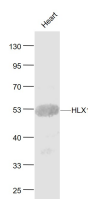
techsupport@bioss.com.cn

400-901-9800

### — DATASHEET —

<b>Host:</b> Rabbit	<b>Isotype:</b> IgG	<b>Applications:</b> WB (1:500-2000)
<b>Clonality:</b> Polyclonal		<b>Reactivity:</b> Mouse (predicted: Human, Rat, Rabbit, Pig, Cow, Chicken, Dog)
<b>GeneID:</b> 3142	<b>SWISS:</b> Q14774	<b>Predicted MW.:</b> 51 kDa
<b>Target:</b> HLX1		<b>Subcellular Location:</b> Nucleus
<b>Immunogen:</b> KLH conjugated synthetic peptide derived from human HLX1: 301-400/488.		
<b>Purification:</b> affinity purified by Protein A		
<b>Concentration:</b> 1mg/ml		
<b>Storage:</b> 0.01M TBS (pH7.4) with 1% BSA, 0.02% Proclin300 and 50% Glycerol. Shipped at 4°C. Store at -20°C for one year. Avoid repeated freeze/thaw cycles.		
<b>Background:</b> Transcription factor required for TBX21/T-bet-dependent maturation of Th1 cells as well as maintenance of Th1-specific gene expression. Involved in embryogenesis and hematopoiesis. Tissue specificity: Low level in normal B and T-cells, high level in activated lymphocytes and monocytes. Also found in thymus, tonsil, bone marrow, developing vessels, and fetal brain.		

### — VALIDATION IMAGES —



Sample: Heart (Mouse) Lysate at 40 ug Primary:  
Anti- HLX1 (bs-8174R) at 1/1000 dilution  
Secondary: IRDye800CW Goat Anti-Rabbit IgG at  
1/20000 dilution Predicted band size: 51 kD  
Observed band size: 51 kD