

bs-23327R**[Primary Antibody]****CATSPER Rabbit pAb****Bioss**
ANTIBODIES

www.bioss.com.cn

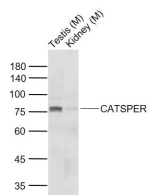
sales@bioss.com.cn

techsupport@bioss.com.cn

400-901-9800

— DATASHEET —

Host: Rabbit	Isotype: IgG	Applications: WB (1:500-2000)
Clonality: Polyclonal		Reactivity: Mouse (predicted: Rat)
GeneID: 225865	SWISS: Q91ZR5	
Target: CATSPER		
Immunogen: KLH conjugated synthetic peptide derived from mouse CATSPER: 451-550/686. < Extracellular >		Predicted MW.: 90 kDa
Purification: affinity purified by Protein A		Subcellular Location: Cell membrane
Concentration: 1mg/ml		
Storage: 0.01M TBS (pH7.4) with 1% BSA, 0.02% Proclin300 and 50% Glycerol. Shipped at 4°C. Store at -20°C for one year. Avoid repeated freeze/thaw cycles.		
Background: CATSPER1 is a voltage-gated calcium channel that plays a central role in sperm cell hyperactivation. It controls calcium entry to mediate the hyperactivated motility, a step needed for sperm motility which is essential late in the preparation of sperm for fertilization. It is activated by intracellular alkalinization.		

— VALIDATION IMAGES —

Sample: Lane 1: Mouse Testis tissue lysates Lane
2: Mouse Kidney tissue lysates Primary: Anti-
CATSPER (bs-23327R) at 1/1000 dilution
Secondary: IRDye800CW Goat Anti-Rabbit IgG at
1/20000 dilution Predicted band size: 90 kD
Observed band size: 77 kD

— SELECTED CITATIONS —

- **[IF=8.071]** Wen-bo Yuan. et al. TET1 mediated male reproductive toxicity induced by Bisphenol A through Catsper-Ca2+ signaling pathway. Environ Pollut. 2022 Mar;296:118739 WB ;Mouse. 34953956