

bs-3099R**[Primary Antibody]****phospho-Cofilin (Ser3) Rabbit pAb****Bioss**
ANTIBODIES

www.bioss.com.cn

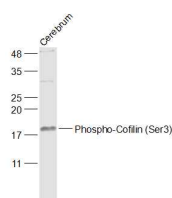
sales@bioss.com.cn

techsupport@bioss.com.cn

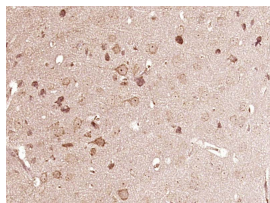
400-901-9800

— DATASHEET —

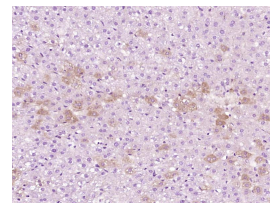
| | | |
|--|----------------------|--|
| Host: Rabbit | Isotype: IgG | Applications: WB (1:500-2000) IHC-P (1:100-500) IHC-F (1:100-500) IF (1:100-500) |
| Clonality: Polyclonal | | |
| GeneID: 1072 | SWISS: P23528 | |
| Target: Cofilin (Ser3) | | Reactivity: Mouse, Rat (predicted: Human, Pig, Sheep, Cow, Horse) |
| Immunogen: KLH conjugated Synthesised phosphopeptide derived from human Cofilin around the phosphorylation site of Ser3: A(p-S)GV. | | |
| Purification: affinity purified by Protein A | | Predicted MW.: 18 kDa |
| Concentration: 1mg/ml | | Subcellular Location: Cell membrane ,Cytoplasm ,Nucleus |
| Storage: 0.01M TBS (pH7.4) with 1% BSA, 0.02% Proclin300 and 50% Glycerol. Shipped at 4°C. Store at -20°C for one year. Avoid repeated freeze/thaw cycles. | | |
| Background: The protein encoded by this gene can polymerize and depolymerize F-actin and G-actin in a pH-dependent manner. Increased phosphorylation of this protein by LIM kinase aids in Rho-induced reorganization of the actin cytoskeleton. Cofilin is a widely distributed intracellular actin-modulating protein that binds and depolymerizes filamentous F-actin and inhibits the polymerization of monomeric G-actin in a pH-dependent manner. It is involved in the translocation of actin-cofilin complex from cytoplasm to nucleus. | | |

— VALIDATION IMAGES —

Sample: Cerebrum (Mouse) Lysate at 40 ug
 Primary: Anti-Phospho-Cofilin (Ser3) (bs-3099R)
 at 1/1000 dilution Secondary: IRDye800CW Goat
 Anti-Rabbit IgG at 1/20000 dilution Predicted
 band size: 18 kD Observed band size: 18 kD



Paraformaldehyde-fixed, paraffin embedded
 (Mouse brain); Antigen retrieval by boiling in
 sodium citrate buffer (pH6.0) for 15min; Block
 endogenous peroxidase by 3% hydrogen
 peroxide for 20 minutes; Blocking buffer (normal
 goat serum) at 37°C for 30min; Antibody
 incubation with (Phospho-Cofilin (Ser3))
 Polyclonal Antibody, Unconjugated (bs-3099R)
 at 1:400 overnight at 4°C, followed by operating
 according to SP Kit(Rabbit) (sp-0023)
 instructions and DAB staining.



Paraformaldehyde-fixed, paraffin embedded
 (Rat liver); Antigen retrieval by boiling in sodium
 citrate buffer (pH6.0) for 15min; Block
 endogenous peroxidase by 3% hydrogen
 peroxide for 20 minutes; Blocking buffer (normal
 goat serum) at 37°C for 30min; Antibody
 incubation with (Phospho-Cofilin (Ser3))
 Polyclonal Antibody, Unconjugated (bs-3099R)
 at 1:400 overnight at 4°C, followed by operating
 according to SP Kit(Rabbit) (sp-0023)
 instructions and DAB staining.

— SELECTED CITATIONS —

- **[IF=4.014]** Nuo Heng. et al. RhoA improves cryopreservation of rooster sperm through the Rho/RhoA-associated Kinase/cofilin pathway. POULTRY SCIENCE. 2022 Jul;102051 WB ;Chicken. 35961254
- **[IF=2.705]** Xue Y et al. Methamphetamine reduces expressions of tight junction proteins, rearranges F-actin cytoskeleton and increases the blood brain barrier permeability via the RhoA/ROCK-dependent pathway. Biochem Biophys Res Commun. 2019 Feb 5;509(2):395-401. WB ;Rat. 30594393
- **[IF=2.894]** Wufuer R et al. Downregulation of Rac1/PAK1/LIMK1/cofilin signaling pathway in colon cancer SW620 cells

Important Note: This product as supplied is intended for research use only, not for use in human, therapeutic or diagnostic applications.

treated with Chlorin e6 photodynamic therapyPhotodiagnosis Photodyn Ther.2020 Dec 8;102143. WB ;Human.
33307230