

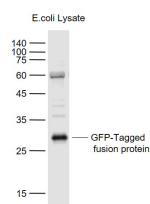
**bs-2194R****[ Primary Antibody ]****EGFP Rabbit pAb****BioSS**  
**ANTIBODIES**

www.bioss.com.cn

sales@bioss.com.cn

techsupport@bioss.com.cn

400-901-9800

**— DATASHEET —****Host:** Rabbit**Isotype:** IgG**Applications:** WB (1:1000-10000)**Clonality:** Polyclonal**Target:** EGFP**Purification:** affinity purified by Protein A**Concentration:** 1mg/ml**Storage:** 0.01M TBS (pH7.4) with 1% BSA, 0.02% Proclin300 and 50% Glycerol.  
Shipped at 4°C. Store at -20°C for one year. Avoid repeated freeze/thaw cycles.**Background:** Enhanced Blue Fluorescent Protein (EBFP) emits a strong blue fluorescence. EBFP can be used as protein "tags" to study the sub-cellular localization of proteins and/or their translocation upon stimulation or as markers for transfection in transient and stable expression systems.**Reactivity:** Species independent**— VALIDATION IMAGES —**

Sample: Lane 1: GFP-Tagged fusion protein (full length) Overexpression E.coli Lysate (Cat#: bs-33009P) at 4 ug Primary: Anti-EGFP (bs-2194R) at 1/1000 dilution Secondary: IRDye800CW Goat Anti-Rabbit IgG at 1/20000 dilution Predicted band size: 28 kD Observed band size: 28 kD

**— SELECTED CITATIONS —**

- **[IF=5.6]** Xi Zhao. et al. Immune Rejection Mediated by prf1 and gzmb Affects the Colonization of Fat Greenling (Hexagrammos otakii) Spermatogonia in Heterotransplantation. INT J MOL SCI. 2024 Jan;25(10):5157 Co-IP ;Fish. 38791196
- **[IF=4.6]** Haimei Qin. et al. Establishing an induced infertile chicken line for efficient germline transmission of exogenous PGCs. J INTEGR AGR. 2024 Aug;; IF ;Chicken. 10.1016/j.jia.2024.08.009
- **[IF=4.4]** Yongsen Wen. et al. Construction and immune evaluation of the recombinant duck adenovirus type 3 delivering capsid protein VP1 of the type 1 duck hepatitis virus. POULTRY SCIENCE. 2023 Sep;;103117 WB ;Duck. 10.1016/j.psj.2023.103117
- **[IF=3.961]** Li Y et al. Conditional Deletion of FOXL2 and SMAD4 in Gonadotropes of Adult Mice Causes Isolated FSH Deficiency.Endocrinology. 2018 Jul 1;159(7):2641-2655. IF ;. 29800110
- **[IF=4.123]** Yang Sidi. et al. Salmonella Effector SpvB Inhibits NF-κB Activity via KEAP1-Mediated Downregulation of IKKβ. Front Cell Infect Mi. 2021 Mar;11:207 WB ;Human. 33816345

Important Note: This product as supplied is intended for research use only, not for use in human, therapeutic or diagnostic applications.