

**bs-24134R****[ Primary Antibody ]****RANBP3L Rabbit pAb****Bioss**  
**ANTIBODIES**

www.bioss.com.cn

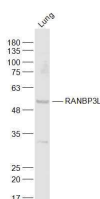
sales@bioss.com.cn

techsupport@bioss.com.cn

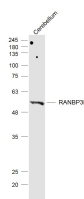
400-901-9800

**— DATASHEET —**

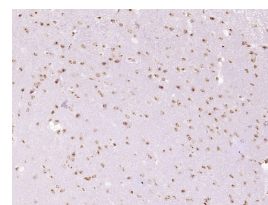
<b>Host:</b> Rabbit	<b>Isotype:</b> IgG	<b>Applications:</b> <b>WB</b> (1:500-2000) <b>IHC-P</b> (1:100-500) <b>IHC-F</b> (1:100-500) <b>IF</b> (1:100-500)  <b>Reactivity:</b> Mouse  <b>Predicted MW.:</b> 52 kDa  <b>Subcellular Location:</b> Cytoplasm ,Nucleus
<b>Clonality:</b> Polyclonal		
<b>GeneID:</b> 223332	<b>SWISS:</b> Q6PDH4	
<b>Target:</b> RANBP3L		
<b>Immunogen:</b> KLH conjugated synthetic peptide derived from mouse RANBP3L: 331-430/491.		
<b>Purification:</b> affinity purified by Protein A		
<b>Concentration:</b> 1mg/ml		
<b>Storage:</b> 0.01M TBS (pH7.4) with 1% BSA, 0.02% Proclin300 and 50% Glycerol. Shipped at 4°C. Store at -20°C for one year. Avoid repeated freeze/thaw cycles.		
<b>Background:</b> RANBP3L (RAN Binding Protein 3 Like) is a Protein Coding gene. An important paralog of this gene is RANBP3.		

**— VALIDATION IMAGES —**

Sample: Lung (Mouse) Lysate at 40 ug Primary: Anti-RANBP3L (bs-24134R) at 1/1000 dilution  
 Secondary: IRDye800CW Goat Anti-Rabbit IgG at 1/20000 dilution Predicted band size: 52 kD  
 Observed band size: 52 kD



Sample: Cerebellum (Mouse) Lysate at 40 ug Primary: Anti-RANBP3L (bs-24134R) at 1/1000 dilution  
 Secondary: IRDye800CW Goat Anti-Rabbit IgG at 1/20000 dilution Predicted band size: 52 kD  
 Observed band size: 52 kD



Paraformaldehyde-fixed, paraffin embedded (Mouse brain); Antigen retrieval by boiling in sodium citrate buffer (pH6.0) for 15min; Block endogenous peroxidase by 3% hydrogen peroxide for 20 minutes; Blocking buffer (normal goat serum) at 37°C for 30min; Antibody incubation with (RANBP3L) Polyclonal Antibody, Unconjugated (bs-24134R) at 1:400 overnight at 4°C, followed by operating according to SP Kit(Rabbit) (sp-0023) instructions and DAB staining.