

## CD244 Rabbit pAb

Catalog Number: bs-2470R

Target Protein: CD244

Concentration: 1mg/ml

Form: Liquid

Host: Rabbit

Clonality: Polyclonal

Isotype: IgG

Applications: WB (1:500-2000)

Reactivity: Human, Rat (predicted:Mouse)

Predicted MW: 42 kDa

Entrez Gene: 51744

Swiss Prot: Q9BZW8

Source: KLH conjugated synthetic peptide derived from human CD244: 151-250/370.

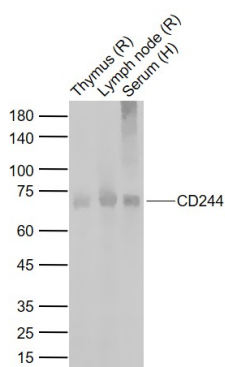
Purification: affinity purified by Protein A

Storage: 0.01M TBS (pH7.4) with 1% BSA, 0.02% Proclin300 and 50% Glycerol.

Shipped at 4°C. Store at -20°C for one year. Avoid repeated freeze/thaw cycles.

**Background:** CD244 is expressed on all human NK cells, a subpopulation of T cells, basophils and monocytes. CD244 activates NK cell mediated cytotoxicity, induces secretion of IFN-gamma and matrix metalloproteinases, and NK cell invasiveness. Although there have been several molecules shown to interact with CD244, the signaling mechanism of CD244-mediated activation of NK cells is still unknown. It is a high affinity receptor for CD48.

### VALIDATION IMAGES



Sample: Lane 1: Rat Thymus tissue lysates Lane 2: Rat Lymph node tissue lysates Lane 3: Human Serum  
Primary: Anti-CD244 (bs-2470R) at 1/1000 dilution Secondary: IRDye800CW Goat Anti-Rabbit IgG at 1/20000 dilution  
Predicted band size: 42 kD Observed band size: 70 kD

## PRODUCT SPECIFIC PUBLICATIONS

---

[IF=6.66] Peiffer, Daniel S., et al. "Dietary consumption of black raspberries or their anthocyanin constituents alters innate immune cell trafficking in esophageal cancer." *Cancer immunology research* 4.1 (2016): 72-82. IHC ; ="Rat" . 26603620

[IF=4.047] Xu Xiaoyan. et al. A novel 2B4 receptor leads to worse pregnancy outcomes by facilitating TNF- $\alpha$  and IFN- $\gamma$  production in dNK cells during *Toxoplasma gondii* infection. *PARASITE VECTOR*. 2022 Dec;15(1):1-15 WB ; Human . 36153598