

bs-9692R**[Primary Antibody]****C20orf111 Rabbit pAb****BioSS**
ANTIBODIES

www.bioss.com.cn

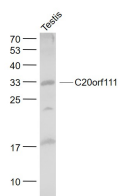
sales@bioss.com.cn

techsupport@bioss.com.cn

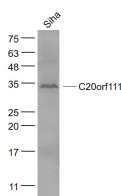
400-901-9800

— DATASHEET —

Host: Rabbit	Isotype: IgG	Applications: WB (1:500-2000)
Clonality: Polyclonal		
GeneID: 51526	SWISS: Q9NX31	
Target: C20orf111		
Immunogen: KLH conjugated synthetic peptide derived from human C20orf111: 1-100/292.		
Purification: affinity purified by Protein A		
Concentration: 1mg/ml		
Storage: 0.01M TBS (pH7.4) with 1% BSA, 0.02% Proclin300 and 50% Glycerol. Shipped at 4°C. Store at -20°C for one year. Avoid repeated freeze/thaw cycles.		Reactivity: Human, Mouse (predicted: Rat, Rabbit, Pig, Sheep, Cow, Zebrafish, Chicken, Dog)
Background: Representing about 2% of human DNA, chromosome 20 consists of approximately 63 million bases and 600 genes. Chromosome 20 contains a region with numerous genes expressed in the epididymis, which are thought important for seminal production, and some viewed as potential targets for male contraception. The PRNP gene encoding the prion protein associated with spongiform encephalopathies, like Creutzfeldt-Jakob disease, is found on chromosome 20. Amyotrophic lateral sclerosis, spinal muscular atrophy, ring chromosome 20 epilepsy syndrome and Alagille syndrome are also associated with chromosome 20. The C20orf111 gene product has been provisionally designated C20orf111 pending further characterization.		Predicted MW.: 32 kDa

— VALIDATION IMAGES —

Sample: Testis(Mouse) Lysate at 40 ug Primary:
Anti- C20orf111 (bs-9692R) at 1/1000 dilution
Secondary: IRDye800CW Goat Anti-Rabbit IgG at
1/20000 dilution Predicted band size: 32 kD
Observed band size: 32 kD



Sample: SiHa(Human) Cell Lysate at 30 ug
Primary: Anti- C20orf111 (bs-9692R) at 1/1000
dilution Secondary: IRDye800CW Goat Anti-
Rabbit IgG at 1/20000 dilution Predicted band
size: 32 kD Observed band size: 32 kD