

bs-9688R**[Primary Antibody]****phospho-BLNK (Tyr189) Rabbit pAb****BioSS**
ANTIBODIES

www.bioss.com.cn

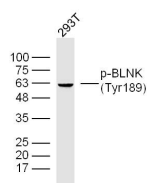
sales@bioss.com.cn

techsupport@bioss.com.cn

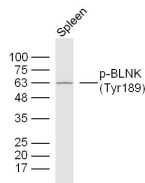
400-901-9800

— DATASHEET —

Host: Rabbit Clonality: Polyclonal GeneID: 29760 Target: BLNK (Tyr189) Immunogen: KLH conjugated synthesised phosphopeptide derived from human BLNK around the phosphorylation site of Tyr189: EN(p-Y)IH. Purification: affinity purified by Protein A Concentration: 1mg/ml Storage: 0.01M TBS (pH7.4) with 1% BSA, 0.02% Proclin300 and 50% Glycerol. Shipped at 4°C. Store at -20°C for one year. Avoid repeated freeze/thaw cycles. Background: This gene encodes a cytoplasmic linker or adaptor protein that plays a critical role in B cell development. This protein bridges B cell receptor-associated kinase activation with downstream signaling pathways, thereby affecting various biological functions. The phosphorylation of five tyrosine residues is necessary for this protein to nucleate distinct signaling effectors following B cell receptor activation. Mutations in this gene cause hypoglobulinemia and absent B cells, a disease in which the pro-to pre-B-cell transition is developmentally blocked. Deficiency in this protein has also been shown in some cases of pre-B acute lymphoblastic leukemia. Alternatively spliced transcript variants have been found for this gene. [provided by RefSeq, May 2012].	Isotype: IgG SWISS: Q8WV28 Applications: WB (1:500-2000) Reactivity: Human, Mouse (predicted: Rat) Predicted MW.: 65 kDa Subcellular Location: Cell membrane ,Cytoplasm
---	---

— VALIDATION IMAGES —

Sample: 293T Cell (Human) Lysate at 40 ug
Primary: Anti-Phospho-BLNK(Tyr189) (bs-9688R)
at 1/300 dilution Secondary: IRDye800CW Goat
Anti-Rabbit IgG at 1/20000 dilution Predicted
band size: 65 kD Observed band size: 63 kD



Sample: Spleen (Mouse) Lysate at 40 ug Primary:
Anti-Phospho-BLNK(Tyr189) (bs-9688R) at 1/300
dilution Secondary: IRDye800CW Goat Anti-
Rabbit IgG at 1/20000 dilution Predicted band
size: 65 kD Observed band size: 63 kD