

bs-0416R**[Primary Antibody]****BioSS**
ANTIBODIES

www.bioss.com.cn

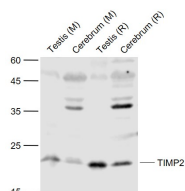
sales@bioss.com.cn

techsupport@bioss.com.cn

400-901-9800

TIMP-2 Rabbit pAb**DATASHEET**

Host: Rabbit Clonality: Polyclonal GeneID: 7077 Target: TIMP-2 Immunogen: KLH conjugated synthetic peptide derived from human TIMP-2: 131-220/220. Purification: affinity purified by Protein A Concentration: 1mg/ml Storage: 0.01M TBS (pH7.4) with 1% BSA, 0.02% Proclin300 and 50% Glycerol. Shipped at 4°C. Store at -20°C for one year. Avoid repeated freeze/thaw cycles. Background: This gene is a member of the TIMP gene family. The proteins encoded by this gene family are natural inhibitors of the matrix metalloproteinases, a group of peptidases involved in degradation of the extracellular matrix. In addition to an inhibitory role against metalloproteinases, the encoded protein has a unique role among TIMP family members in its ability to directly suppress the proliferation of endothelial cells. As a result, the encoded protein may be critical to the maintenance of tissue homeostasis by suppressing the proliferation of quiescent tissues in response to angiogenic factors, and by inhibiting protease activity in tissues undergoing remodelling of the extracellular matrix. [provided by RefSeq, Jul 2008].	Isotype: IgG SWISS: P16035	Applications: WB (1:500-2000) IHC-P (1:100-500) IHC-F (1:100-500) IF (1:100-500) Reactivity: Human, Mouse, Rat (predicted: Pig, Sheep, Cow, Dog, Horse) Predicted MW.: 24 kDa Subcellular Location: Secreted
--	---	---

VALIDATION IMAGES

Sample: Lane 1: Testis (Mouse) Lysate at 40 ug
 Lane 2: Cerebrum (Mouse) Lysate at 40 ug
 Lane 3: Testis (Rat) Lysate at 40 ug
 Lane 4: Cerebrum (Rat) Lysate at 40 ug
 Primary: Anti- TIMP2 (bs-0416R) at 1/1000 dilution
 Secondary: IRDye800CW Goat Anti-Rabbit IgG at 1/20000 dilution
 Predicted band size: 22 kD
 Observed band size: 22 kD

SELECTED CITATIONS

- **[IF=5.064]** Xia Liu. et al. The adipokine orosomucoid alleviates adipose tissue fibrosis via the AMPK pathway. Acta Pharmacol Sin. 2021 Apr;:1-9 WB ;Mouse. 33875797
- **[IF=3.53]** Lu HY, Huang CY, Shih CM, Chang WH, Tsai CS, et al. (2015) Dipeptidyl Peptidase-4 Inhibitor Decreases Abdominal Aortic Aneurysm Formation through GLP-1-Dependent Monocytic Activity in Mice. PLoS ONE 10(4): e0121077. IHC ;="Mouse". 25876091
- **[IF=3.31]** Watts, Ryan P., et al. "Novel 24-h ovine model of brain death to study the profile of the endothelin axis during

Important Note: This product as supplied is intended for research use only, not for use in human, therapeutic or diagnostic applications.

- cardiopulmonary injury." Intensive Care Medicine Experimental 3.1 (2015): 31. IHC ;="". 26596583
- **[IF=2.92]** He, Qiaowei, et al. "Single minded 2-s (SIM2-s) gene is expressed in human GBM cells and involved in GBM invasion." Cancer Biology & Therapy 9.6 (2010): 430-436. WB ;="Human". 20448453
 - **[IF=2.6]** Fu Yuheng. et al. Study on the mechanism of action of Wu Mei Pill in inhibiting rheumatoid arthritis through TLR4-NF-κB pathway. J ORTHOP SURG RES. 2024 Dec;19(1):1-12 WB ;Rat. 38218891