

## LAMP3 Rabbit pAb

Catalog Number: bs-2556R

Target Protein: LAMP3

Concentration: 1mg/ml

Form: Liquid

Host: Rabbit

Clonality: Polyclonal

Isotype: IgG

Applications: WB (1:500-2000), Flow-Cyt (1ug/Test)

Reactivity: Human (predicted:Mouse, Rat, Rabbit, Cow, Horse)

Predicted MW: 44 kDa

Entrez Gene: 27074

Swiss Prot: Q9UQV4

Source: KLH conjugated synthetic peptide derived from human LAMP-3: 301-416/416.

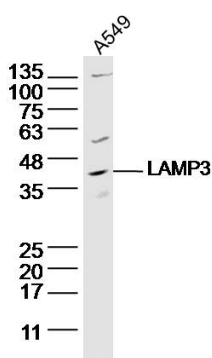
Purification: affinity purified by Protein A

Storage: 0.01M TBS (pH7.4) with 1% BSA, 0.02% Proclin300 and 50% Glycerol.

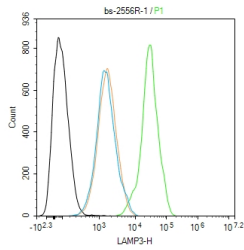
Shipped at 4°C. Store at -20°C for one year. Avoid repeated freeze/thaw cycles.

**Background:** LAMP3 might change the lysosome function after the transfer of peptide MHC class II molecules to the surface of dendritic cells. It's over expression is associated with an enhanced metastatic potential and may be a prognostic factor for cervical cancer. Expressed in lymphoid organs and dendritic cells and lung. Up regulated in carcinomas of the esophagus, colon, rectum, ureter, stomach, breast, fallopian tube, thyroid and parotid tissues.

### VALIDATION IMAGES



Sample: A549 Cell (Human) Lysate at 40 ug Primary: Anti- LAMP3 (bs-2556R) at 1/300 dilution Secondary: IRDye800CW Goat Anti-Rabbit IgG at 1/20000 dilution Predicted band size: 44 kD Observed band size: 44 kD



Blank control (black line) :Hela. Primary Antibody (green line): Rabbit Anti-LAMP3 antibody (bs-2556R) Dilution:1ug/Test; Secondary Antibody (white blue line) : Goat anti-rabbit IgG-AF488 Dilution: 0.5ug/Test. Isotype control (orange line) : Normal Rabbit IgG Protocol The cells were fixed with 4% PFA (10min at room temperature)and then permeabilized with 90% ice-cold methanol for 20 min at -20°C, The cells were then incubated in 5%BSA to block non-specific protein-protein interactions for 30 min at room temperature .Cells stained with Primary Antibody for 30 min at room temperature. The secondary antibody used for 40 min at room temperature. Acquisition of 20,000 events was performed.