

bs-13554R**[Primary Antibody]****ZBED4 Rabbit pAb****BioSS**
ANTIBODIES

www.bioss.com.cn

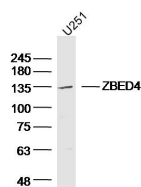
sales@bioss.com.cn

techsupport@bioss.com.cn

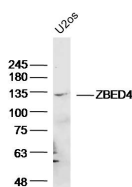
400-901-9800

— DATASHEET —

Host: Rabbit Clonality: Polyclonal GeneID: 9889 Target: ZBED4 Immunogen: KLH conjugated synthetic peptide derived from human ZBED4: 101-200/1171. Purification: affinity purified by Protein A Concentration: 1mg/ml Storage: 0.01M TBS (pH7.4) with 1% BSA, 0.02% Proclin300 and 50% Glycerol. Shipped at 4°C. Store at -20°C for one year. Avoid repeated freeze/thaw cycles. Background: The zinc finger BED domain-containing protein family (ZBED) is comprised of ZBED1, ZBED2, ZBED3, ZBED4 and ZBED5. They each contain one BED-type zinc finger domains with the exception of ZBED4, which contain 4 BED-type zinc finger domains. ZBED1 is thought to function as a transcription factor that regulates a number of ribosomal protein (RP) encoded genes by binding specifically to 5'-TGTCG[CT]GA[CT]A-3' DNA regions found in RP promoters. ZBED3 is an Axin-binding protein involved in Wnt/beta-catenin signaling modulation. ZBED4 expression has been shown in human and mouse retinas where it is thought to act as a regulatory protein in cone photoreceptors and Müller cells. The functions of ZBED2 and ZBED5 have yet to be elucidated.	Isotype: IgG SWISS: O75132 Applications: WB (1:500-2000) Reactivity: Human (predicted: Mouse, Rat, Pig, Horse) Predicted MW.: 130 kDa Subcellular Location: Cytoplasm ,Nucleus
--	---

— VALIDATION IMAGES —

Sample: U251 (human) cell Lysate at 40 ug
Primary: Anti- ZBED4 (bs-13554R) at 1/300
dilution Secondary: IRDye800CW Goat Anti-Rabbit IgG at 1/20000 dilution Predicted band size: 130 kD Observed band size: 135 kD



Sample: U2os (human) cell Lysate at 40 ug
Primary: Anti- ZBED4 (bs-13554R) at 1/300
dilution Secondary: IRDye800CW Goat Anti-Rabbit IgG at 1/20000 dilution Predicted band size: 130 kD Observed band size: 130 kD