

---

## HLA Class II DR4 Rabbit pAb

Catalog Number: bs-17539R

Target Protein: HLA Class II DR4

Concentration: 1mg/ml

Form: Liquid

Host: Rabbit

Clonality: Polyclonal

Isotype: IgG

Applications: WB (1:500-2000)

Reactivity: Human (predicted:Monkey)

Predicted MW: 26 kDa

Subcellular: Cytoplasmic vesicle ,Cell membrane

Locations:

Entrez Gene: 3123

Source: KLH conjugated synthetic peptide derived from human HLA Class II DR4: 61-160/254.

Purification: affinity purified by Protein A

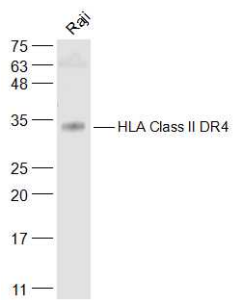
Storage: 0.01M TBS (pH7.4) with 1% BSA, 0.02% Proclin300 and 50% Glycerol.

Shipped at 4°C. Store at -20°C for one year. Avoid repeated freeze/thaw cycles.

**Background:** HLA-DRB1 belongs to the HLA class II beta chain paralogs. The class II molecule is a heterodimer consisting of an alpha (DRA) and a beta chain (DRB), both anchored in the membrane. It plays a central role in the immune system by presenting peptides derived from extracellular proteins. Class II molecules are expressed in antigen presenting cells. The beta chain is approximately 26-28 kDa. It is encoded by 6 exons. Exon one encodes the leader peptide; exons 2 and 3 encode the two extracellular domains; exon 4 encodes the transmembrane domain; and exon 5 encodes the cytoplasmic tail. Within the DR molecule the beta chain contains all the polymorphisms specifying the peptide binding specificities. Hundreds of DRB1 alleles have been described and some alleles have increased frequencies associated with certain diseases or conditions. For example, DRB1\*1302 has been related to acute and chronic hepatitis B virus persistence. There are multiple pseudogenes of this gene. [provided by RefSeq, Jul 2020]

### VALIDATION IMAGES

---



Sample: Raji(Human) Cell Lysate at 30 ug Primary: Anti-HLA Class II DR4 (bs-17539R) at 1/300 dilution  
Secondary: IRDye800CW Goat Anti-Rabbit IgG at 1/20000 dilution Predicted band size: 26 kD Observed band size: 31 kD