

bs-16887R**[Primary Antibody]****KCNH6 Rabbit pAb****Bioss**
ANTIBODIES

www.bioss.com.cn

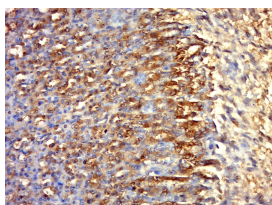
sales@bioss.com.cn

techsupport@bioss.com.cn

400-901-9800

— DATASHEET —

Host: Rabbit	Isotype: IgG	Applications: IHC-P (1:100-500)
Clonality: Polyclonal		IHC-F (1:100-500)
GeneID: 81033	SWISS: Q9H252	IF (1:100-500)
Target: KCNH6		Reactivity: Rat (predicted: Human)
Immunogen: KLH conjugated synthetic peptide derived from human KCNH6: 401-500/994. < Extracellular >		
Purification: affinity purified by Protein A		Predicted MW.: 110 kDa
Concentration: 1mg/ml		Subcellular Location: Cell membrane
Storage: 0.01M TBS (pH7.4) with 1% BSA, 0.02% Proclin300 and 50% Glycerol. Shipped at 4°C. Store at -20°C for one year. Avoid repeated freeze/thaw cycles.		
Background: Pore-forming (alpha) subunit of voltage-gated potassium channel. Elicits a slowly activating, rectifying current (By similarity). Channel properties may be modulated by cAMP and subunit assembly.		

— VALIDATION IMAGES —

Paraformaldehyde-fixed, paraffin embedded (rat stomach); Antigen retrieval by boiling in sodium citrate buffer (pH6.0) for 15min; Block endogenous peroxidase by 3% hydrogen peroxide for 20 minutes; Blocking buffer (normal goat serum) at 37°C for 30min; Antibody incubation with (KCNH6) Polyclonal Antibody, Unconjugated (bs-16887R) at 1:400 overnight at 4°C, followed by a conjugated secondary (sp-0023) for 20 minutes and DAB staining.