

bs-16886R**[Primary Antibody]****KCNH5 Rabbit pAb****BioSS**
ANTIBODIES

www.bioss.com.cn

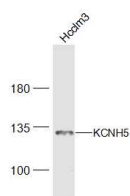
sales@bioss.com.cn

techsupport@bioss.com.cn

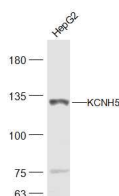
400-901-9800

— DATASHEET —

Host: Rabbit	Isotype: IgG	Applications: WB (1:500-2000)
Clonality: Polyclonal		Reactivity: Human (predicted: Mouse, Rat, Pig, Sheep, Cow, Dog, Horse)
GeneID: 27133	SWISS: Q8NCM2	Predicted MW.: 112 kDa
Target: KCNH5		Subcellular Location: Cell membrane
Immunogen: KLH conjugated synthetic peptide derived from human KCNH5: 351-450/988. < Extracellular >		
Purification: affinity purified by Protein A		
Concentration: 1mg/ml		
Storage: 0.01M TBS (pH7.4) with 1% BSA, 0.02% Proclin300 and 50% Glycerol. Shipped at 4°C. Store at -20°C for one year. Avoid repeated freeze/thaw cycles.		
Background: Voltage-gated potassium (Kv) channels represent the most complex class of voltage-gated ion channels from both functional and structural standpoints. Their diverse functions include regulating neurotransmitter release, heart rate, insulin secretion, neuronal excitability, epithelial electrolyte transport, smooth muscle contraction, and cell volume. The KCNH5 gene encodes a member of the potassium channel, voltage-gated, subfamily H. This member is a pore-forming (alpha) subunit of a voltage-gated non-inactivating delayed rectifier potassium channel. KCNH5 is not expressed in differentiating myoblasts.		

— VALIDATION IMAGES —

Sample: Hcclm3(Human) Cell Lysate at 30 ug
Primary: Anti-KCNH5 (bs-16886R) at 1/300
dilution Secondary: IRDye800CW Goat Anti-Rabbit IgG at 1/20000 dilution Predicted band size: 112 kD Observed band size: 117 kD



Sample: HepG2(Human) Cell Lysate at 30 ug
Primary: Anti-KCNH5 (bs-16886R) at 1/300
dilution Secondary: IRDye800CW Goat Anti-Rabbit IgG at 1/20000 dilution Predicted band size: 112 kD Observed band size: 117 kD