

bs-5849R**[Primary Antibody]****ADAM18 Rabbit pAb****BioSS**
ANTIBODIES

www.bioss.com.cn

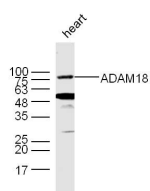
sales@bioss.com.cn

techsupport@bioss.com.cn

400-901-9800

— DATASHEET —

Host: Rabbit	Isotype: IgG	Applications: WB (1:500-2000)
Clonality: Polyclonal		Reactivity: Mouse (predicted: Human, Dog)
GeneID: 8749		
Target: ADAM18		Predicted MW.: 62 kDa
Immunogen: KLH conjugated synthetic peptide derived from human ADAM18: 301-400/739. < Extracellular >		Subcellular Location: Cell membrane
Purification: affinity purified by Protein A		
Concentration: 1mg/ml		
Storage: 0.01M TBS (pH7.4) with 1% BSA, 0.02% Proclin300 and 50% Glycerol. Shipped at 4°C. Store at -20°C for one year. Avoid repeated freeze/thaw cycles.		
Background: ADAM18 was first described as tMDC III (testis-specific Metalloproteinase-like disintegrin-like cysteine-rich protein-III). ADAM18 is a member of the ADAMs family (A Disintegrin And Metalloproteinase), but does not contain the canonical HEXXHxxxxH zinc-binding metalloproteinase catalytic site. The domain structure of the full-length ADAM18 includes a signal sequence, propeptide domain, metalloproteinase-like domain, disintegrin-like domain, cys-rich domain, EGF-like domain, a short spacer region, then the transmembrane domain and a cytoplasmic domain. Like many of the reproductive-specific ADAMs, ADAM18 plays a nonenzymatic role, or (as is the case for ADAMs 1 & 2 (fertilin alpha and beta)), the protein acts in concert with a proteolytically active ADAM to process proteins. Little is known about interactions between ADAM18 and other ADAMs. To date, 4 different sequences for human ADAM18 are published; 739, 715, 182 and 153 amino acids in length.		

— VALIDATION IMAGES —

Sample: Heart (Mouse) Lysate at 40 ug Primary:
Anti- ADAM18 (bs-10196R) at 1/300 dilution
Secondary: IRDye800CW Goat Anti-Rabbit IgG at
1/20000 dilution Predicted band size: 62 kD
Observed band size: 75/50 kD