

bs-5922R**[Primary Antibody]****PGRMC Rabbit pAb****Bioss**
ANTIBODIES

www.bioss.com.cn

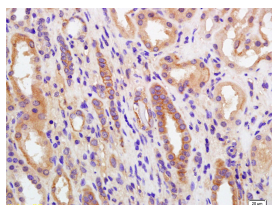
sales@bioss.com.cn

techsupport@bioss.com.cn

400-901-9800

DATASHEET

Host: Rabbit	Isotype: IgG	Applications: IHC-P (1:100-500) IHC-F (1:100-500) IF (1:100-500) Reactivity: Human (predicted: Mouse, Rat, Rabbit, Pig, Cow, Chicken) Predicted MW.: 21 kDa Subcellular Location: Cell membrane ,Cytoplasm
Clonality: Polyclonal		
GeneID: 10857	SWISS: O00264	
Target: PGRMC		
Immunogen: KLH conjugated synthetic peptide derived from human PGRMC: 75-170/195.		
Purification: affinity purified by Protein A		
Concentration: 1mg/ml		
Storage: 0.01M TBS (pH7.4) with 1% BSA, 0.02% Proclin300 and 50% Glycerol. Shipped at 4°C. Store at -20°C for one year. Avoid repeated freeze/thaw cycles.		
Background: PGRMC1 is a progesterone receptor component of 195 aa with a 26 residue N terminal hydrophobic region and no N terminal glycosylation site. It has an overall homology of 50% with PGRMC2 but their C terminal regions have a 68% homology, including a highly conserved 58 residue sequence. PGRMC1 is a heme bind proteins that is up-regulated in several cancers. In breast tumors, PGRMC1 is associated with hypoxia estrogen receptor-negative status. PGRMC1 is also shown to stimulate AKT phosphorylation and is known to stabilise the EGFR receptor tyrosine kinase.		

VALIDATION IMAGES

Tissue/cell: human kidney tissue; 4% Paraformaldehyde-fixed and paraffin-embedded; Antigen retrieval: citrate buffer (0.01M, pH 6.0), Boiling bathing for 15min; Block endogenous peroxidase by 3% Hydrogen peroxide for 30min; Blocking buffer (normal goat serum, C-0005) at 37°C for 20 min; Incubation: Anti-PGRMC Polyclonal Antibody, Unconjugated(bs-5922R) 1:200, overnight at 4°C, followed by conjugation to the secondary antibody(SP-0023) and DAB(C-0010) staining