

bs-5795R**[Primary Antibody]****Robo4 Rabbit pAb****BioSS**
ANTIBODIES

www.bioss.com.cn

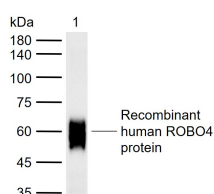
sales@bioss.com.cn

techsupport@bioss.com.cn

400-901-9800

— DATASHEET —

Host: Rabbit	Isotype: IgG	Applications: WB (1:500-2000)
Clonality: Polyclonal		Reactivity: Human (predicted: Mouse, Rat, Rabbit, Pig, Cow, Dog, Horse)
GeneID: 54538		Predicted MW.: 108 kDa
Target: Robo4		Subcellular Location: Cell membrane
Immunogen: KLH conjugated synthetic peptide derived from human Robo4: 261-360/1007.		
Purification: affinity purified by Protein A		
Concentration: 1mg/ml		
Storage: 0.01M TBS (pH7.4) with 1% BSA, 0.02% Proclin300 and 50% Glycerol. Shipped at 4°C. Store at -20°C for one year. Avoid repeated freeze/thaw cycles.		
Background: Robo4 is a vascular specific receptor that is a repulsive cue to migrating endothelial cells during vascular development. Guidance and patterning of axons are orchestrated by cell surface receptors and ligands that provide directional cues. Interactions between the Robo receptor and Slit ligand families of proteins initiate signaling cascades that repel axonal outgrowth. In contrast to known neuronal Robo family members, the arrangement of the extracellular domains of Robo4 diverges significantly from that of all other Robo family members. Robo4 is specifically expressed in the vascular endothelium during murine embryonic development; the only Robo family member expressed in primary endothelial cells. Robo4 also has a role in regulating the migration of endothelial cells during tumor angiogenesis.		

— VALIDATION IMAGES —

Sample: Lane 1: Recombinant human ROBO4 protein, C-His (HEK293)(bs-43625P) Primary: Anti-Robo4 (bs-5795R) at 1/1000 dilution
Secondary: IRDye800CW Goat Anti-Rabbit IgG at 1/20000 dilution Predicted band size: 108 kDa
Observed band size: 60 kDa