

**bs-11930R****[ Primary Antibody ]****BioSS**  
ANTIBODIES

www.bioss.com.cn

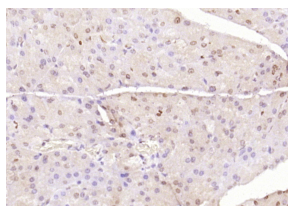
sales@bioss.com.cn

techsupport@bioss.com.cn

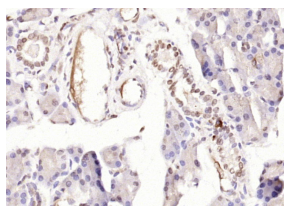
400-901-9800

**PTF1A Rabbit pAb****— DATASHEET —**

<b>Host:</b> Rabbit	<b>Isotype:</b> IgG	<b>Applications:</b> IHC-P (1:100-500) IHC-F (1:100-500) IF (1:100-500)
<b>Clonality:</b> Polyclonal		
<b>GeneID:</b> 256297	<b>SWISS:</b> Q7RTS3	
<b>Target:</b> PTF1A		<b>Reactivity:</b> Mouse, Rat (predicted: Human, Pig, Cow)
<b>Immunogen:</b> KLH conjugated synthetic peptide derived from human PTF1A: 165-260/328.		
<b>Purification:</b> affinity purified by Protein A		<b>Predicted MW.:</b> 35 kDa
<b>Concentration:</b> 1mg/ml		<b>Subcellular Location:</b> Cytoplasm ,Nucleus
<b>Storage:</b> 0.01M TBS (pH7.4) with 1% BSA, 0.02% Proclin300 and 50% Glycerol. Shipped at 4°C. Store at -20°C for one year. Avoid repeated freeze/thaw cycles.		
<b>Background:</b> PTF1 is a pancreas-specific protein that functions as a component of the trimeric pancreas transcription factor 1 (PTF1) complex. Localizing to the nucleus, PTF1 contains one basic helix-loop-helix (bHLH) domain and is believed to play an important role in mammalian pancreatic development, functioning as a transcription factor that regulates the specification of all three pancreatic cell types. PTF1 interacts with RBP-J x and, together, they cooperate in regulating the expression of PDX-1 (pancreas/duodenum homeobox protein 1), a key regulator of pancreatic islet development and insulin gene transcription in beta-cells. Loss of functional PTF1 can cause pancreatic progenitors to take on the normal fates of duodenal epithelia. Mutations in the gene encoding PTF1 lead to diabetes mellitus and cerebellar hypoplasia/agenesis, suggesting that PTF1 also plays and important role in cerebellar neurogenesis.		

**— VALIDATION IMAGES —**

Paraformaldehyde-fixed, paraffin embedded (mouse pancreas); Antigen retrieval by boiling in sodium citrate buffer (pH6.0) for 15min; Block endogenous peroxidase by 3% hydrogen peroxide for 20 minutes; Blocking buffer (normal goat serum) at 37°C for 30min; Antibody incubation with (PTF1A) Polyclonal Antibody, Unconjugated (bs-11930R) at 1:200 overnight at 4°C, followed by operating according to SP Kit(Rabbit) (sp-0023) instructions and DAB staining.



Paraformaldehyde-fixed, paraffin embedded (rat pancreas); Antigen retrieval by boiling in sodium citrate buffer (pH6.0) for 15min; Block endogenous peroxidase by 3% hydrogen peroxide for 20 minutes; Blocking buffer (normal goat serum) at 37°C for 30min; Antibody incubation with (PTF1A) Polyclonal Antibody, Unconjugated (bs-11930R) at 1:200 overnight at 4°C, followed by operating according to SP Kit(Rabbit) (sp-0023) instructions and DAB staining.