

**bs-11923R****[ Primary Antibody ]****PASD5 Rabbit pAb****BioSS**  
**ANTIBODIES**

www.bioss.com.cn

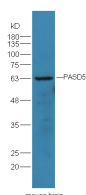
sales@bioss.com.cn

techsupport@bioss.com.cn

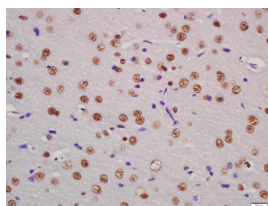
400-901-9800

**— DATASHEET —**

<b>Host:</b> Rabbit	<b>Isotype:</b> IgG	<b>Applications:</b> <b>WB</b> (1:500-2000) <b>IHC-P</b> (1:100-500) <b>IHC-F</b> (1:100-500) <b>IF</b> (1:100-500)  <b>Reactivity:</b> Mouse, Rat (predicted: Human, Rabbit, Pig, Cow, Dog)  <b>Predicted MW.:</b> 63 kDa  <b>Subcellular Location:</b> Nucleus
<b>Clonality:</b> Polyclonal		
<b>GeneID:</b> 4861	<b>SWISS:</b> Q99742	
<b>Target:</b> PASD5		
<b>Immunogen:</b> KLH conjugated synthetic peptide derived from human PASD5/NPAS1: 21-120/590.		
<b>Purification:</b> affinity purified by Protein A		
<b>Concentration:</b> 1mg/ml		
<b>Storage:</b> 0.01M TBS (pH7.4) with 1% BSA, 0.02% Proclin300 and 50% Glycerol. Shipped at 4°C. Store at -20°C for one year. Avoid repeated freeze/thaw cycles.		
<b>Background:</b> The protein encoded by this gene is a member of the basic helix-loop-helix (bHLH)-PAS family of transcription factors. Studies of a related mouse gene suggest that it functions in neurons. The exact function of this gene is unclear, but it may play protective or modulatory roles during late embryogenesis and postnatal development. [provided by RefSeq, Jul 2008]		

**— VALIDATION IMAGES —**

Sample: Brain (Mouse) Lysate at 40 ug Primary:  
Anti-PASD5 (bs-11923R) at 1/300 dilution  
Secondary: HRP conjugated Goat-Anti-rabbit IgG  
(bs-0295G-HRP) at 1/5000 dilution Predicted  
band size: 63 kD Observed band size: 63 kD



Tissue/cell: rat brain tissue; 4%  
Paraformaldehyde-fixed and paraffin-  
embedded; Antigen retrieval: citrate buffer (0.01M, pH 6.0 ), Boiling bathing for 15min; Block  
endogenous peroxidase by 3% Hydrogen  
peroxide for 30min; Blocking buffer (normal goat  
serum,C-0005) at 37°C for 20 min; Incubation:  
Anti-PASD5 Polyclonal Antibody,  
Unconjugated(bs-11923R) 1:200, overnight at  
4°C, followed by conjugation to the secondary  
antibody(SP-0023) and DAB(C-0010) staining