

bs-17858R**[Primary Antibody]****MSL3L1 Rabbit pAb****Bioss**
ANTIBODIES

www.bioss.com.cn

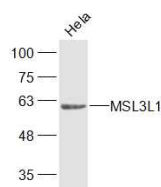
sales@bioss.com.cn

techsupport@bioss.com.cn

400-901-9800

— DATASHEET —

Host: Rabbit	Isotype: IgG	Applications: WB (1:500-2000)
Clonality: Polyclonal		
GeneID: 10943	SWISS: Q8N5Y2	
Target: MSL3L1		
Immunogen: KLH conjugated synthetic peptide derived from human MSL3L1: 1-100/521.		
Purification: affinity purified by Protein A		
Concentration: 1mg/ml		
Storage: 0.01M TBS (pH7.4) with 1% BSA, 0.02% Proclin300 and 50% Glycerol. Shipped at 4°C. Store at -20°C for one year. Avoid repeated freeze/thaw cycles.		Reactivity: Human (predicted: Mouse, Pig, Sheep, Cow, Dog, GuineaPig, Horse)
Background: This gene encodes a nuclear protein that is similar to the product of the Drosophila male-specific lethal-3 gene. The Drosophila protein plays a critical role in a dosage-compensation pathway, which equalizes X-linked gene expression in males and females. Thus, the human protein is thought to play a similar function in chromatin remodeling and transcriptional regulation, and it has been found as part of a complex that is responsible for histone H4 lysine-16 acetylation. This gene can undergo X inactivation. Alternative splicing results in multiple transcript variants. Related pseudogenes have been identified on chromosomes 2, 7 and 8. [provided by RefSeq, Jul 2010]		Predicted MW.: 60 kDa
		Subcellular Location: Nucleus

— VALIDATION IMAGES —

Sample: HeLa(Human) Cell Lysate at 30 ug
Primary: Anti-MSL3L1 (bs-17858R) at 1/300
dilution Secondary: IRDye800CW Goat Anti-
Rabbit IgG at 1/20000 dilution Predicted band
size: 60 kD Observed band size: 60 kD