

**bs-19792R****[ Primary Antibody ]****SLC10A6 Rabbit pAb****BioSS**  
**ANTIBODIES**

www.bioss.com.cn

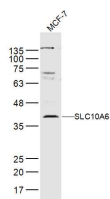
sales@bioss.com.cn

techsupport@bioss.com.cn

400-901-9800

**— DATASHEET —**

<b>Host:</b> Rabbit	<b>Isotype:</b> IgG	<b>Applications:</b> WB (1:500-2000)
<b>Clonality:</b> Polyclonal		<b>Reactivity:</b> Human
<b>GeneID:</b> 345274	<b>SWISS:</b> Q3KNW5	
<b>Target:</b> SLC10A6		
<b>Immunogen:</b> KLH conjugated synthetic peptide derived from human SLC10A6: 301-377/377. < Cytoplasmic >		<b>Predicted MW.:</b> 42 kDa
<b>Purification:</b> affinity purified by Protein A		<b>Subcellular Location:</b> Cell membrane
<b>Concentration:</b> 1mg/ml		
<b>Storage:</b> 0.01M TBS (pH7.4) with 1% BSA, 0.02% Proclin300 and 50% Glycerol. Shipped at 4°C. Store at -20°C for one year. Avoid repeated freeze/thaw cycles.		
<b>Background:</b> SLC10A6 (Solute Carrier Family 10 Member 6) is a Protein Coding gene. Among its related pathways are Transport of glucose and other sugars, bile salts and organic acids, metal ions and amine compounds. GO annotations related to this gene include bile acid:sodium symporter activity and sodium-dependent organic anion transmembrane transporter activity. An important paralog of this gene is SLC10A2.		

**— VALIDATION IMAGES —**

Sample: MCF-7(Human) Lysate at 30 ug Primary:  
Anti- SLC10A6 (bs-19792R) at 1/300 dilution  
Secondary: IRDye800CW Goat Anti-Rabbit IgG at  
1/20000 dilution Predicted band size: 42 kD  
Observed band size: 42 kD