

bs-21815R**[Primary Antibody]****MITF Rabbit pAb****Bioss**
ANTIBODIES

www.bioss.com.cn

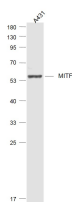
sales@bioss.com.cn

techsupport@bioss.com.cn

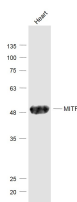
400-901-9800

— DATASHEET —

Host: Rabbit	Isotype: IgG	Applications: WB (1:500-2000)
Clonality: Polyclonal		Reactivity: Human, Mouse (predicted: Rat, Rabbit, Pig, Sheep, Cow, Chicken)
GeneID: 4286	SWISS: O75030	
Target: MITF		Predicted MW.: 59 kDa
Immunogen: KLH conjugated synthetic peptide derived from human MITF: 1-100/526.		Subcellular Location: Nucleus
Purification: affinity purified by Protein A		
Concentration: 1mg/ml		
Storage: 0.01M TBS (pH7.4) with 1% BSA, 0.02% Proclin300 and 50% Glycerol. Shipped at 4°C. Store at -20°C for one year. Avoid repeated freeze/thaw cycles.		
Background: The protein encoded by this gene is a transcription factor that contains both basic helix-loop-helix and leucine zipper structural features. The encoded protein regulates melanocyte development and is responsible for pigment cell-specific transcription of the melanogenesis enzyme genes. Heterozygous mutations in the this gene cause auditory-pigmentary syndromes, such as Waardenburg syndrome type 2 and Tietz syndrome. [provided by RefSeq, Aug 2017]		

— VALIDATION IMAGES —

Sample: A431(Human) Cell Lysate at 30 ug
Primary: Anti-MITF (bs-21815R) at 1/1000
dilution Secondary: IRDye800CW Goat Anti-
Rabbit IgG at 1/20000 dilution Predicted band
size: 59 kD Observed band size: 59 kD



Sample: Heart (Mouse) Lysate at 40 ug Primary:
Anti- MITF (bs-21815R) at 1/1000 dilution
Secondary: IRDye800CW Goat Anti-Rabbit IgG at
1/20000 dilution Predicted band size: 59 kD
Observed band size: 59 kD