

**bs-19791R****[ Primary Antibody ]****Histone binding protein/SLBP Rabbit pAb****Bioss**  
ANTIBODIES

www.bioss.com.cn

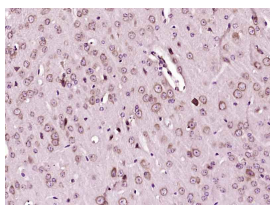
sales@bioss.com.cn

techsupport@bioss.com.cn

400-901-9800

**— DATASHEET —**

<b>Host:</b> Rabbit	<b>Isotype:</b> IgG	<b>Applications:</b> IHC-P (1:100-500) IHC-F (1:100-500) IF (1:100-500)
<b>Clonality:</b> Polyclonal		
<b>GeneID:</b> 7884	<b>SWISS:</b> Q14493	
<b>Target:</b> Histone binding protein/SLBP		
<b>Immunogen:</b> KLH conjugated synthetic peptide derived from human Histone binding protein/SLBP: 121-220/270.		
<b>Purification:</b> affinity purified by Protein A		<b>Reactivity:</b> Mouse (predicted: Human, Rat, Pig, Cow, Zebrafish, Chicken, Dog, Horse, Firefly)
<b>Concentration:</b> 1mg/ml		<b>Predicted MW.:</b> 30 kDa
<b>Storage:</b> 0.01M TBS (pH7.4) with 1% BSA, 0.02% Proclin300 and 50% Glycerol. Shipped at 4°C. Store at -20°C for one year. Avoid repeated freeze/thaw cycles.		<b>Subcellular Location:</b> Cytoplasm ,Nucleus
<b>Background:</b> This gene encodes a protein that binds to the stem-loop structure in replication-dependent histone mRNAs. Histone mRNAs do not contain introns or polyadenylation signals, and are processed by endonucleolytic cleavage. The stem-loop structure is essential for efficient processing but this structure also controls the transport, translation and stability of histone mRNAs. Expression of the protein is regulated during the cell cycle, increasing more than 10-fold during the latter part of G1. [provided by RefSeq, Jul 2008]		

**— VALIDATION IMAGES —**

Paraformaldehyde-fixed, paraffin embedded (Mouse brain); Antigen retrieval by boiling in sodium citrate buffer (pH6.0) for 15min; Block endogenous peroxidase by 3% hydrogen peroxide for 20 minutes; Blocking buffer (normal goat serum) at 37°C for 30min; Antibody incubation with (SLBP) Polyclonal Antibody, Unconjugated (bs-19791R) at 1:400 overnight at 4°C, followed by operating according to SP Kit(Rabbit) (sp-0023) instructions and DAB staining.