

bs-21812R**[Primary Antibody]****Connexin 26 Rabbit pAb****BioSS**
ANTIBODIES

www.bioss.com.cn

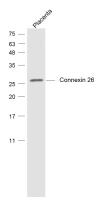
sales@bioss.com.cn

techsupport@bioss.com.cn

400-901-9800

— DATASHEET —

Host: Rabbit	Isotype: IgG	Applications: WB (1:500-2000)
Clonality: Polyclonal		Reactivity: Mouse (predicted: Rat)
GeneID: 14619	SWISS: Q00977	
Target: Connexin 26		
Immunogen: KLH conjugated synthetic peptide derived from mouse Connexin 26 : 61-160/226. < Cytoplasmic >		Predicted MW.: 26 kDa
Concentration: 1mg/ml		Subcellular Location: Cell membrane
Storage: 0.01M TBS (pH7.4) with 1% BSA, 0.02% Proclin300 and 50% Glycerol. Shipped at 4°C. Store at -20°C for one year. Avoid repeated freeze/thaw cycles.		
Background: Gap junction channels consist of connexin protein subunits, which are encoded by a multigene family. GJBs (gap junction proteins or connexins) play crucial functional roles associated with these channels. Immunohistochemical staining of human cochlear cells demonstrated high levels of GJB2 expression. Mutations in GJB2 are associated with genetically derived hearing impairments, including autosomal recessive nonsyndromic deafness.		

— VALIDATION IMAGES —

Sample: Placenta (Mouse) Lysate at 40 ug
Primary: Anti-Connexin 26 (bs-21812R) at 1/1000
dilution Secondary: IRDye800CW Goat Anti-
Rabbit IgG at 1/20000 dilution Predicted band
size: 26 kD Observed band size: 26 kD