

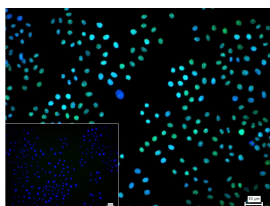
**bsm-60550R****[ Primary Antibody ]****BioSS**  
ANTIBODIES

www.bioss.com.cn

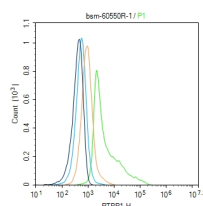
sales@bioss.com.cn

techsupport@bioss.com.cn

400-901-9800

**PTBP1 Recombinant Rabbit mAb****— DATASHEET —****Host:** Rabbit**Isotype:** IgG/Kappa**Clonality:** Recombinant**CloneNo.:** C1F6**Target:** PTBP1**Purification:** affinity purified by Protein A**Concentration:** 1mg/ml**Storage:** 0.01M TBS (pH7.4) with 1% BSA, 0.02% Proclin300 and 50% Glycerol.  
Shipped at 4°C. Store at -20°C for one year. Avoid repeated freeze/thaw cycles.**Background:** Plays a role in pre-mRNA splicing and in the regulation of alternative splicing events. Binds to the polypyrimidine tract of introns. May promote RNA looping when bound to two separate polypyrimidine tracts in the same pre-mRNA. May promote the binding of U2 snRNP to pre-mRNA. Cooperates with RAVR1 to modulate switching between mutually exclusive exons during maturation of the TPM1 pre-mRNA.**Applications:** WB (1:1000-5000)**IHC-P** (1:100-500)**IHC-F** (1:100-500)**IF** (1:100-500)**Flow-Cyt** (1:50-100)**ICC/IF** (1:50-200)**Reactivity:** Human, Mouse, Rat**Subcellular Location:** Nucleus**— VALIDATION IMAGES —**

4% Paraformaldehyde-fixed HeLa (H) cell; Triton X-100 at r.t. for 20 min; Antibody incubation with (PTBP1) monoclonal Antibody, unconjugated (bsm-60550R) 1:100, 90 min at 37°C; followed by conjugated Goat Anti-Rabbit IgG antibody (green, bs-60295G-BF488) at 37°C for 90 min, DAPI (blue, C02-04002) was used to stain the cell nuclei. PBS instead of the primary antibody was used as the blank control.



The HeLa (H) cells were fixed with 4% PFA (10 min at r.t.) and then permeabilized with 90% ice-cold methanol for 20 min at -20°C, the cells then were incubated in 5%BSA to block non-specific protein-protein interactions (30 min at r.t.). Primary Antibody (green): Rabbit Anti-PTBP1 antibody (bsm-60550R, 1:100); Secondary Antibody (white blue): Goat anti-Rabbit IgG-BF488 (bs-60295G-BF488): 1 µg/test. Isotype Control (orange): Rabbit IgG (bs-0295P). Blank control (black): PBS. Acquisition of 20,000 events was performed.