

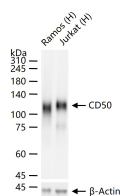
bsm-60619R**[Primary Antibody]****Bioss**
ANTIBODIES

www.bioss.com.cn

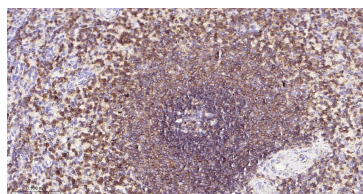
sales@bioss.com.cn

techsupport@bioss.com.cn

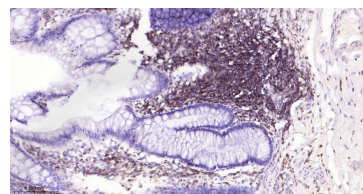
400-901-9800

CD50 Recombinant Rabbit mAb**— DATASHEET —****Host:** Rabbit**Isotype:** IgG**Clonality:** Recombinant**CloneNo.:** E3C9**Target:** CD50**Immunogen:** A synthesized peptide derived from human ICAM 3: 170-200.**Purification:** affinity purified by Protein A**Concentration:** 1mg/ml**Storage:** 0.01M TBS (pH7.4) with 1% BSA, 0.02% Proclin300 and 50% Glycerol.
Shipped at 4°C. Store at -20°C for one year. Avoid repeated freeze/thaw cycles.**Background:** The protein encoded by this gene is a member of the intercellular adhesion molecule (ICAM) family. All ICAM proteins are type I transmembrane glycoproteins, contain 2-9 immunoglobulin-like C2-type domains, and bind to the leukocyte adhesion LFA-1 protein. This protein is constitutively and abundantly expressed by all leucocytes and may be the most important ligand for LFA-1 in the initiation of the immune response. It functions not only as an adhesion molecule, but also as a potent signalling molecule. Alternative splicing results in multiple transcript variants encoding different isoforms. [provided by RefSeq, Feb 2016]**Applications:** WB (1:500-2000)**IHC-P** (1:50-200)**IHC-F** (1:50-200)**IF** (1:50-200)**ICC/IF** (1:50-200)**Reactivity:** Human**Subcellular Location:** Cell membrane**— VALIDATION IMAGES —**

25 ug total protein per lane of various lysates (see on figure) probed with CD50 monoclonal antibody, unconjugated (bsm-60619R) at 1:1000 dilution and 4°C overnight incubation. Followed by conjugated secondary antibody incubation at r.t. for 60 min.



Paraformaldehyde-fixed, paraffin embedded Human Spleen; Antigen retrieval by boiling in sodium citrate buffer (pH6.0) for 15 min; The section was incubated with CD50 Monoclonal Antibody, Unconjugated (bsm-60619R) at 1:200 overnight at 4°C, followed by conjugation to the bs-0295G-HRP and DAB (C-0010) staining.



Paraformaldehyde-fixed, paraffin embedded Human Colon; Antigen retrieval by boiling in sodium citrate buffer (pH6.0) for 15 min; The section was incubated with CD50 Monoclonal Antibody, Unconjugated (bsm-60619R) at 1:200 overnight at 4°C, followed by conjugation to the bs-0295G-HRP and DAB (C-0010) staining.