

bs-21800R

[Primary Antibody]

VMAT1 Rabbit pAb

Bioss
ANTIBODIES

www.bioss.com.cn

sales@bioss.com.cn

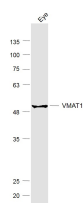
techsupport@bioss.com.cn

400-901-9800

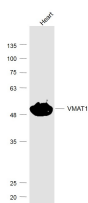
— DATASHEET —

Host: Rabbit	Isotype: IgG	Applications: WB (1:500-2000) Reactivity: Mouse (predicted: Human, Rat) Predicted MW.: 58 kDa
Clonality: Polyclonal		
GeneID: 110877	SWISS: Q8R090	
Target: VMAT1		
Immunogen: KLH conjugated synthetic peptide derived from mouse VMAT1 : 461-521/521.		
Purification: affinity purified by Protein A		
Concentration: 1mg/ml		
Storage: 0.01M TBS (pH7.4) with 1% BSA, 0.02% Proclin300 and 50% Glycerol. Shipped at 4°C. Store at -20°C for one year. Avoid repeated freeze/thaw cycles.		

— VALIDATION IMAGES —



Sample: Eye (Mouse) Lysate at 40 ug Primary:
Anti-VMAT1 (bs-21800R) at 1/1000 dilution
Secondary: IRDye800CW Goat Anti-Rabbit IgG at
1/20000 dilution Predicted band size: 58 kD
Observed band size: 58 kD



Sample: Heart (Mouse) Lysate at 40 ug Primary:
Anti-VMAT1 (bs-21800R) at 1/1000 dilution
Secondary: IRDye800CW Goat Anti-Rabbit IgG at
1/20000 dilution Predicted band size: 58 kD
Observed band size: 58 kD