

bs-21796R**[Primary Antibody]**

Neurologin 1 Rabbit pAb

BioSS
ANTIBODIES

www.bioss.com.cn

sales@bioss.com.cn

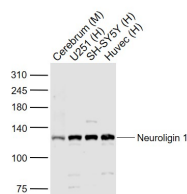
techsupport@bioss.com.cn

400-901-9800

— DATASHEET —

Host: Rabbit	Isotype: IgG	Applications: WB (1:500-2000)
Clonality: Polyclonal		Reactivity: Human, Mouse (predicted: Pig, Sheep, Cow, Chicken, Dog, Horse)
GeneID: 22871	SWISS: Q8N2Q7	Predicted MW.: 87 kDa
Target: Neurologin 1		Subcellular Location: Cell membrane ,Cytoplasm
Immunogen: KLH conjugated synthetic peptide derived from human Neurologin 1 : 621-720/840. < Extracellular >		
Purification: affinity purified by Protein A		
Concentration: 1mg/ml		
Storage: 0.01M TBS (pH7.4) with 1% BSA, 0.02% Proclin300 and 50% Glycerol. Shipped at 4°C. Store at -20°C for one year. Avoid repeated freeze/thaw cycles.		
Background: Neurologin 1 is a synaptic cell-adhesion molecule that is enriched in postsynaptic densities where it may recruit receptors, channels, and signal-transduction molecules to synaptic sites of cell adhesion. In addition, the neurologin/beta-neurexin junction may be involved in the excitatory/inhibitory specification of CNS neuron synapses. A role for Neurologin 1 is also suggested in autism.		

— VALIDATION IMAGES —



Sample: Lane 1: Cerebrum (Mouse) Lysate at 40 ug
Lane 2: U251 (Human) Cell Lysate at 30 ug
Lane 3: SH-SY5Y (Human) Cell Lysate at 30 ug
Lane 4: Huvec (Human) Cell Lysate at 30 ug
Primary: Anti-Neurologin 1 (bs-21796R) at 1/1000 dilution
Secondary: IRDye800CW Goat Anti-Rabbit IgG at 1/20000 dilution
Predicted band size: 120 kD
Observed band size: 120 kD

— SELECTED CITATIONS —

- **[IF=5.1]** Qingying Yu. et al. GPR120 internalization: a key mechanism for EPA in antidepressant action.. Food Funct. 2025 Mar 31;16(7):2893-2908. Western blot ; Mouse. 40125583
- **[IF=4.8]** Qingying Yu. et al. Sinisan ameliorates early-life stress-induced depressive-like behaviors by repairing DRN synaptic damage through CaSR. FRONT PHARMACOL. 2025 May;16: WB ; Rat. 40469980