

bs-3177R**[Primary Antibody]****phospho-GAB2 (Ser159) Rabbit pAb****Bioss**
ANTIBODIES

www.bioss.com.cn

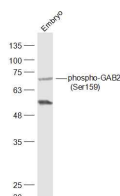
sales@bioss.com.cn

techsupport@bioss.com.cn

400-901-9800

— DATASHEET —

Host: Rabbit	Isotype: IgG	Applications: WB (100-500)
Clonality: Polyclonal		Reactivity: Mouse (predicted: Human, Rat, Rabbit, Pig, Chicken, Horse)
GeneID: 9846	SWISS: Q9UQC2	Predicted MW.: 74 kDa
Target: GAB2 (Ser159)		Subcellular Location: Cell membrane ,Cytoplasm
Immunogen: KLH conjugated Synthesised phosphopeptide derived from human GAB2 around the phosphorylation site of Ser159: KS(p-S)AP.		
Purification: affinity purified by Protein A		
Concentration: 1mg/ml		
Storage: 0.01M TBS (pH7.4) with 1% BSA, 0.02% Proclin300 and 50% Glycerol. Shipped at 4°C. Store at -20°C for one year. Avoid repeated freeze/thaw cycles.		
Background: This gene is a member of the GRB2-associated binding protein (GAB) gene family. These proteins contain pleckstrin homology (PH) domain, and bind SHP2 tyrosine phosphatase and GRB2 adapter protein. They act as adapters for transmitting various signals in response to stimuli through cytokine and growth factor receptors, and T- and B-cell antigen receptors. The protein encoded by this gene is the principal activator of phosphatidylinositol-3 kinase in response to activation of the high affinity IgE receptor. Two alternatively spliced transcripts encoding different isoforms have been described for this gene. [provided by RefSeq, Nov 2009]		

— VALIDATION IMAGES —

Sample: Embryo (Mouse) Lysate at 40 ug
Primary: Anti-phospho-GAB2 (Ser159) (bs-3177R)
at 1/1000 dilution Secondary: IRDye800CW Goat
Anti-Rabbit IgG at 1/20000 dilution Predicted
band size: 74 kD Observed band size: 72 kD

— SELECTED CITATIONS —

- **[IF=3.118]** Fu S et al. Berberine suppresses mast cell-mediated allergic responses via regulating FcεRI-mediated and MAPK signaling. Int Immunopharmacol. 2019 Jun;71:1-6. WB ;Human. 30861392