

**bs-3131R****[ Primary Antibody ]****phospho-Estrogen Receptor alpha (Ser104 + Ser106) Rabbit pAb****BioSS**  
**ANTIBODIES**

www.bioss.com.cn

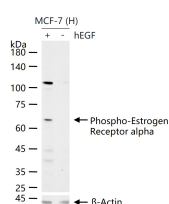
sales@bioss.com.cn

techsupport@bioss.com.cn

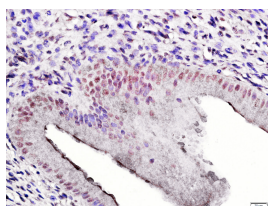
400-901-9800

**— DATASHEET —**

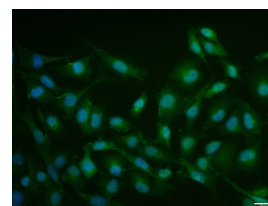
<b>Host:</b> Rabbit	<b>Isotype:</b> IgG	<b>Applications:</b> <b>WB</b> (1:500-2000) <b>IHC-P</b> (1:100-500) <b>IHC-F</b> (1:100-500) <b>IF</b> (1:100-500) <b>Flow-Cyt</b> (1µg /Test) <b>ICC/IF</b> (1:50-200)  <b>Reactivity:</b> Human, Rat (predicted: Mouse, Pig, Cow, Horse)  <b>Predicted MW.:</b> 66 kDa  <b>Subcellular Location:</b> Cell membrane ,Cytoplasm ,Nucleus
<b>Clonality:</b> Polyclonal		
<b>GeneID:</b> 2099	<b>SWISS:</b> P03372	
<b>Target:</b> Estrogen Receptor alpha (Ser104 + Ser106)		
<b>Immunogen:</b> KLH conjugated Synthesised phosphopeptide derived from human ER alpha around the phosphorylation site of Ser104/106: SV(p-S)P(p-S)PL.		
<b>Purification:</b> affinity purified by Protein A		
<b>Concentration:</b> 1mg/ml		
<b>Storage:</b> 0.01M TBS (pH7.4) with 1% BSA, 0.02% Proclin300 and 50% Glycerol. Shipped at 4°C. Store at -20°C for one year. Avoid repeated freeze/thaw cycles.		
<b>Background:</b> Estrogen and progesterone receptor are members of a family of transcription factors that are regulated by the binding of their cognate ligands. The interaction of hormone-bound estrogen receptors with estrogen responsive elements(EREs) alters transcription of ERE-containing genes. The carboxy terminal region of the estrgen receptor contains the ligand binding domain, the amino terminus serves as the transactivation domain, and the DNA binding domain is centrally located. Two forms of estrogen receptor have been identified, ER Alpha and ER Beta. ER Alpha and ER Beta have been shown to be differentially activated by various ligands. The biological response to progesterone is mediated by two distinct forms of the human progesterone receptor (hPR-A and hPR-B), which arise from alternative splicing. In most cells, hPR-B functions as a transcriptional activator of progesterone-responsive gene, whereas hPR-A function as a transcriptional inhibitor of all steroid hormone receptors.		

**— VALIDATION IMAGES —**

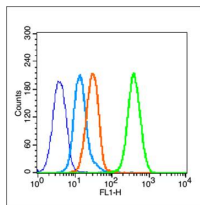
MCF-7 (H) cells were treated with HEGF (100ng/ml) for 15 min, 25 µg total protein per lane of cell lysates (see on figure) probed with Phospho-Estrogen Receptor alpha (Ser104 + Ser106) polyclonal antibody, unconjugated (bs-3131R) at 1:1000 dilution and 4°C overnight incubation. Followed by conjugated secondary antibody incubation at r.t. for 60 min.



Paraformaldehyde-fixed, paraffin embedded (Rat uterus); Antigen retrieval by boiling in sodium citrate buffer (pH6.0) for 15min; Block endogenous peroxidase by 3% hydrogen peroxide for 20 minutes; Blocking buffer (normal goat serum) at 37°C for 30min; Antibody incubation with (Phospho-Estrogen Receptor alpha; p-ESR1) Polyclonal Antibody, Unconjugated (bs-3131R) at 1:400 overnight at 4°C, followed by a conjugated secondary antibody (sp-0023) for 20 minutes and DAB staining.



MCF7 cell; 4% Paraformaldehyde-fixed; Triton X-100 at room temperature for 20 min; Blocking buffer (normal goat serum, C-0005) at 37°C for 20 min; Antibody incubation with (Phospho-Estrogen Receptor alpha (Ser104 + Ser106) ) polyclonal Antibody, Unconjugated (bs-3131R) 1:100, 90 minutes at 37°C; followed by a conjugated Goat Anti-Rabbit IgG antibody at 37°C for 90 minutes, DAPI (blue, C02-04002) was used to stain the cell nuclei.



Blank control (blue line): MCF7 (fixed with 80% ethanol (Overnight at 4°C) and then permeabilized with 90% ice-cold methanol for 30 min on ice). Primary Antibody (green line): Rabbit Anti-Phospho-Estrogen Receptor alpha (Ser104 + Ser106) antibody (bs-3131R), Dilution: 1µg /10<sup>6</sup> cells. Isotype Control Antibody (orange line): Rabbit IgG . Secondary Antibody (white blue line): Goat anti-rabbit IgG-FITC, Dilution: 1µg /test.