

bs-3049R**[Primary Antibody]****Bioss**
ANTIBODIES

www.bioss.com.cn

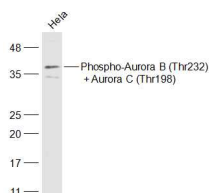
sales@bioss.com.cn

techsupport@bioss.com.cn

400-901-9800

**phospho-Aurora B (Thr232) + Aurora C (Thr198)
Rabbit pAb****— DATASHEET —**

Host: Rabbit	Isotype: IgG	Applications: WB (1:500-2000)
Clonality: Polyclonal		Reactivity: Human (predicted: Mouse, Rat, Rabbit, Pig, Sheep, Cow, Dog, Horse)
GeneID: 9212	SWISS: Q96GD4	Predicted MW.: 39 kDa
Target: Aurora B (Thr232) + Aurora C (Thr198)		Subcellular Location: Cytoplasm ,Nucleus
Immunogen: KLH conjugated Synthesised phosphopeptide derived from human Aurora B around the phosphorylation site of Thr232: RK(p-T)MC.		
Purification: affinity purified by Protein A		
Concentration: 1mg/ml		
Storage: 0.01M TBS (pH7.4) with 1% BSA, 0.02% Proclin300 and 50% Glycerol. Shipped at 4°C. Store at -20°C for one year. Avoid repeated freeze/thaw cycles.		
Background: This gene encodes a member of the aurora kinase subfamily of serine/threonine kinases. The genes encoding the other two members of this subfamily are located on chromosomes 19 and 20. These kinases participate in the regulation of segregation of chromosomes during mitosis and meiosis through association with microtubules. A pseudogene of this gene is located on chromosome 8. Multiple transcript variants encoding different isoforms have been found for this gene. [provided by RefSeq, Feb 2012].		

— VALIDATION IMAGES —

Sample: HeLa(Human) Cell Lysate at 30 ug
Primary: Anti-Phospho-Aurora B (Thr232) +
Aurora C (Thr198) (bs-3049R) at 1/500 dilution
Secondary: IRDye800CW Goat Anti-Rabbit IgG at
1/20000 dilution Predicted band size: 39 kD
Observed band size: 39 kD