

**bs-2735R****[ Primary Antibody ]****GSTP1 Rabbit pAb****BioSS**  
ANTIBODIES

www.bioss.com.cn

sales@bioss.com.cn

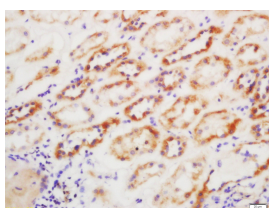
techsupport@bioss.com.cn

400-901-9800

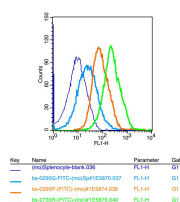
## — DATASHEET —

<b>Host:</b> Rabbit <b>Clonality:</b> Polyclonal <b>GeneID:</b> 2950 <b>Target:</b> GSTP1 <b>Immunogen:</b> KLH conjugated synthetic peptide derived from human GstP1: 121-210/210. <b>Purification:</b> affinity purified by Protein A <b>Concentration:</b> 1mg/ml <b>Storage:</b> 0.01M TBS (pH7.4) with 1% BSA, 0.02% Proclin300 and 50% Glycerol. Shipped at 4°C. Store at -20°C for one year. Avoid repeated freeze/thaw cycles. <b>Background:</b> Glutathione S-transferases (GSTs) are a family of enzymes that play an important role in detoxification by catalyzing the conjugation of many hydrophobic and electrophilic compounds with reduced glutathione. Based on their biochemical, immunologic, and structural properties, the soluble GSTs are categorized into 4 main classes: alpha, mu, pi, and theta. This GST family member is a polymorphic gene encoding active, functionally different GSTP1 variant proteins that are thought to function in xenobiotic metabolism and play a role in susceptibility to cancer, and other diseases. [provided by RefSeq, Jul 2008]	<b>Isotype:</b> IgG <b>SWISS:</b> P09211	<b>Applications:</b> IHC-P (1:100-500) IHC-F (1:100-500) IF (1:100-500) Flow-Cyt (1µg /test)  <b>Reactivity:</b> Human, Mouse (predicted: Rat)  <b>Predicted MW.:</b> 23 kDa  <b>Subcellular Location:</b> Cytoplasm ,Nucleus
--	---	---

## — VALIDATION IMAGES —



Tissue/cell: human kidney tissue; 4% Paraformaldehyde-fixed and paraffin-embedded; Antigen retrieval: citrate buffer (0.01M, pH 6.0), Boiling bathing for 15min; Block endogenous peroxidase by 3% Hydrogen peroxide for 30min; Blocking buffer (normal goat serum, C-0005) at 37°C for 20 min; Incubation: Anti-GSTP1 Polyclonal Antibody, Unconjugated(bs-2735R) 1:200, overnight at 4°C, followed by conjugation to the secondary antibody(SP-0023) and DAB(C-0010) staining



Blank control: mouse splenocytes(blue) Isotype Control Antibody: Rabbit IgG(orange); Secondary Antibody: Goat anti-rabbit IgG-FITC(white blue), Dilution: 1:100 in 1 X PBS containing 0.5% BSA; Primary Antibody Dilution: 1µl in 100 µL 1X PBS containing 0.5% BSA(green).

## — SELECTED CITATIONS —

- **[IF=66.85]** Fangfei Qin. et al. Linking chromatin acylation mark-defined proteome and genome in living cells. CELL. 2023 Mar;186:1066-1085.e36 Other ;. 36868209
- **[IF=7.83]** Zhang, Chunlei, et al. "Insights into the Distinguishing Stress-induced Cytotoxicity of Chiral Gold Nanoclusters and the Relationship with GSTP1." Theranostics WB ;="Human". 25553104
- **[IF=6.158]** Jiang et al. Scavenger receptor-C acts as a receptor for Bacillus thuringiensis vegetative insecticidal protein Vip3Aa and mediates the internalization of Vip3Aa via endocytosis. (2018) PLoS.Pathog. 14:e1007347 WB ;Mouse.

Important Note: This product as supplied is intended for research use only, not for use in human, therapeutic or diagnostic applications.

30286203

- **[IF=2.66]** Zhang, Fu, et al. "Up-regulation of protein tyrosine nitration in methamphetamine-induced neurotoxicity through DDAH/ADMA/NOS pathway." *Neurochemistry International* (2013). WB ;="Rat". 23583342
- **[IF=3.15]** Li, Hongyan, et al. "Differential proteome and gene expression reveal response to carbon ion irradiation in pubertal mice testes." *Toxicology Letters* (2014). WB ;="Mouse". 24440814