

**bs-19783R**

**[ Primary Antibody ]**

## RBPSUHL Rabbit pAb

**Bioss**  
ANTIBODIES

www.bioss.com.cn

sales@bioss.com.cn

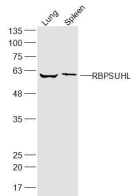
techsupport@bioss.com.cn

400-901-9800

### — DATASHEET —

<b>Host:</b> Rabbit	<b>Isotype:</b> IgG	<b>Applications:</b> WB (1:500-2000)  <b>Reactivity:</b> Mouse (predicted: Human, Rat, Horse)  <b>Predicted MW.:</b> 57 kDa  <b>Subcellular Location:</b> Nucleus
<b>Clonality:</b> Polyclonal		
<b>GeneID:</b> 11317	<b>SWISS:</b> Q9UBG7	
<b>Target:</b> RBPSUHL		
<b>Immunogen:</b> KLH conjugated synthetic peptide derived from human RBPSUHL: 301-400/517.		
<b>Purification:</b> affinity purified by Protein A		
<b>Concentration:</b> 1mg/ml		
<b>Storage:</b> 0.01M TBS (pH7.4) with 1% BSA, 0.02% Proclin300 and 50% Glycerol. Shipped at 4°C. Store at -20°C for one year. Avoid repeated freeze/thaw cycles.		
<b>Background:</b> This gene encodes a member of the suppressor of hairless protein family. A similar protein in mouse is a transcription factor that binds to DNA sequences almost identical to that bound by the Notch receptor signaling pathway transcription factor recombining binding protein J. The mouse protein has been shown to activate transcription in concert with Epstein-Barr virus nuclear antigen-2. Alternative splicing results in multiple transcript variants. [provided by RefSeq, Jul 2013]		

### — VALIDATION IMAGES —



Sample: Lung (Mouse) Lysate at 40 ug Spleen (Mouse) Lysate at 40 ug Primary: Anti-RBPSUHL (bs-19783R) at 1/300 dilution Secondary: IRDye800CW Goat Anti-Rabbit IgG at 1/20000 dilution Predicted band size: 57 kD Observed band size: 57 kD