

**bs-3006R****[ Primary Antibody ]****phospho-arfaptin 2 (Ser260) Rabbit pAb****Bioss**  
**ANTIBODIES**

www.bioss.com.cn

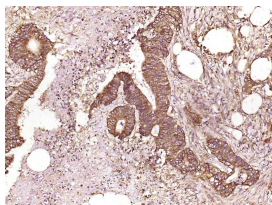
sales@bioss.com.cn

techsupport@bioss.com.cn

400-901-9800

**— DATASHEET —**

<b>Host:</b> Rabbit	<b>Isotype:</b> IgG	<b>Applications:</b> IHC-P (1:100-500) IHC-F (1:100-500) IF (1:100-500)  <b>Reactivity:</b> Human (predicted: Mouse, Rat, Rabbit, Sheep, Cow, Dog)  <b>Predicted MW.:</b> 38 kDa  <b>Subcellular Location:</b> Cytoplasm
<b>Clonality:</b> Polyclonal		
<b>GeneID:</b> 23647	<b>SWISS:</b> P53365	
<b>Target:</b> arfaptin 2 (Ser260)		
<b>Immunogen:</b> KLH conjugated Synthesised phosphopeptide derived from human arfaptin 2 around the phosphorylation site of Ser260: LE(p-S)AQ.		
<b>Purification:</b> affinity purified by Protein A		
<b>Concentration:</b> 1mg/ml		
<b>Storage:</b> 0.01M TBS (pH7.4) with 1% BSA, 0.02% Proclin300 and 50% Glycerol. Shipped at 4°C. Store at -20°C for one year. Avoid repeated freeze/thaw cycles.		
<b>Background:</b> ARFIP2 is a ubiquitously expressed protein implicated in mediating cross talk between RAC and ARF small GTPases. It has been shown that ARFIP2 binds specifically to GTP-bound ARF1 and ARF6, but binds to Rac-GTP and Rac-GDP with similar affinities. The X-ray structure of arfaptin reveals an elongated, crescent-shaped dimer of 3-helix coiled-coils. Structures of arfaptin with Rac bound to either GDP or the slowly hydrolysable analog GMPPNP show that the switch regions adopt similar conformations in both complexes.		

**— VALIDATION IMAGES —**

Paraformaldehyde-fixed, paraffin embedded (Human colon carcinoma); Antigen retrieval by boiling in sodium citrate buffer (pH6.0) for 15min; Block endogenous peroxidase by 3% hydrogen peroxide for 20 minutes; Blocking buffer (normal goat serum) at 37°C for 30min; Antibody incubation with (phospho-arfaptin 2 (Ser260)) Polyclonal Antibody, Unconjugated (bs-3006R) at 1:400 overnight at 4°C, followed by operating according to SP Kit(Rabbit) (sp-0023) instructions and DAB staining.