

COMMD9 Rabbit pAb

Catalog Number: bs-8180R

Target Protein: COMMD9

Concentration: 1mg/ml

Form: Liquid

Host: Rabbit

Clonality: Polyclonal

Isotype: IgG

Applications: WB (1:500-2000)

Reactivity: Mouse (predicted:Human, Rat, Pig, Sheep, Cow, Dog)

Predicted MW: 22 kDa

Entrez Gene: 29099

Swiss Prot: Q9P000

Source: KLH conjugated synthetic peptide derived from human COMMD9: 11-100/198.

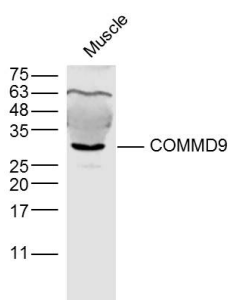
Purification: affinity purified by Protein A

Storage: 0.01M TBS (pH7.4) with 1% BSA, 0.02% Proclin300 and 50% Glycerol.

Shipped at 4°C. Store at -20°C for one year. Avoid repeated freeze/thaw cycles.

Background: COMMD9 (COMM domain containing 9) is a 198 amino acid ubiquitously expressed protein that contains one COMM domain and may be involved in signaling events throughout the cell. The gene encoding COMMD9 maps to human chromosome 11, which houses over 1,400 genes and comprises nearly 4% of the human genome. Jervell and Lange-Nielsen syndrome, Jacobsen syndrome, Niemann-Pick disease, hereditary angioedema and Smith-Lemli-Opitz syndrome are associated with defects in genes that maps to chromosome 11.

VALIDATION IMAGES



Sample: Muscle (Mouse) Lysate at 40 ug Primary: Anti-COMMD9 (bs-8180R) at 1/300 dilution Secondary: IRDye800CW Goat Anti-Rabbit IgG at 1/20000 dilution Predicted band size: 22 kD Observed band size: 30 kD