

bs-2682R**[Primary Antibody]****SLAMF6/LY108 Rabbit pAb****BioSS**
ANTIBODIES

www.bioss.com.cn

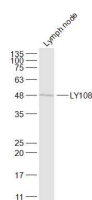
sales@bioss.com.cn

techsupport@bioss.com.cn

400-901-9800

— DATASHEET —

Host: Rabbit	Isotype: IgG	Applications: WB (1:500-2000)
Clonality: Polyclonal		Reactivity: Mouse (predicted: Rat)
GeneID: 30925	SWISS: Q9ET39	
Target: SLAMF6/LY108		
Immunogen: KLH conjugated synthetic peptide derived from mouse SLAMF6: 51-150/331.		Predicted MW.: 37 kDa
Purification: affinity purified by Protein A		Subcellular Location: Cell membrane
Concentration: 1mg/ml		
Storage: 0.01M TBS (pH7.4) with 1% BSA, 0.02% Proclin300 and 50% Glycerol. Shipped at 4°C. Store at -20°C for one year. Avoid repeated freeze/thaw cycles.		
Background: SLAMF6 is a type I transmembrane protein, belonging to the CD2 subfamily of the immunoglobulin superfamily. SLAMF6 is expressed on Natural killer (NK), T, and B lymphocytes. It undergoes tyrosine phosphorylation and associates with the Src homology 2 domain-containing protein (SH2D1A) as well as with SH2 domain-containing phosphatases (SHPs). It may function as a coreceptor in the process of NK cell activation. It can also mediate inhibitory signals in NK cells from X-linked lymphoproliferative patients. It may play a role in the regulation of autoimmune diseases.		

— VALIDATION IMAGES —

Sample: Lymph node (Mouse) Lysate at 40 ug
Primary: Anti-LY108 (bs-2682R) at 1/1000
dilution Secondary: IRDye800CW Goat Anti-Rabbit IgG at 1/20000 dilution Predicted band size: 37 kD Observed band size: 48 kD