

HBS1L Rabbit pAb

Catalog Number: bs-15420R

Target Protein: HBS1L

Concentration: 1mg/ml

Form: Liquid

Host: Rabbit

Clonality: Polyclonal

Isotype: IgG

Applications: IHC-P (1:100-500), IHC-F (1:100-500), IF (1:100-500)

Reactivity: Rat (predicted:Human, Mouse, Rabbit, Pig, Dog)

Predicted MW: 75 kDa

Entrez Gene: 10767

Swiss Prot: Q9Y450

Source: KLH conjugated synthetic peptide derived from human HBS1L: 101-200/684.

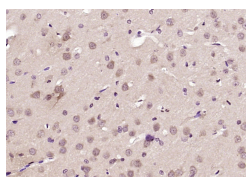
Purification: affinity purified by Protein A

Storage: 0.01M TBS (pH7.4) with 1% BSA, 0.02% Proclin300 and 50% Glycerol.

Shipped at 4°C. Store at -20°C for one year. Avoid repeated freeze/thaw cycles.

Background: HBS1L is a 684 amino acid protein that belongs to the GTP-binding elongation factor family and exists as multiple alternatively spliced isoforms. Expressed in kidney, brain, heart, placenta, liver, muscle and pancreas, HSB1L is thought to play a role in controlling fetal hemoglobin levels, specifically influencing platelet, monocyte and erythrocyte hemoglobin content. The gene encoding HBS1L maps to a locus on human chromosome 6 that is associated with sickle cell anemia and β -thalassemia, suggesting a role for HBS1L in the pathogenesis of blood disorders.

VALIDATION IMAGES



Paraformaldehyde-fixed, paraffin embedded (rat brain); Antigen retrieval by boiling in sodium citrate buffer (pH6.0) for 15min; Block endogenous peroxidase by 3% hydrogen peroxide for 20 minutes; Blocking buffer (normal goat serum) at 37°C for 30min; Antibody incubation with (HBS1L) Polyclonal Antibody, Unconjugated (bs-15420R) at 1:200 overnight at 4°C, followed by operating according to SP Kit(Rabbit) (sp-0023) instructions and DAB staining.