

bs-13903R**[Primary Antibody]****Chimaerin 2 Rabbit pAb****Bioss**
ANTIBODIES

www.bioss.com.cn

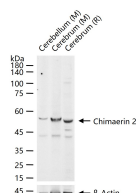
sales@bioss.com.cn

techsupport@bioss.com.cn

400-901-9800

— DATASHEET —

Host: Rabbit	Isotype: IgG	Applications: WB (1:500-2000)
Clonality: Polyclonal		Reactivity: Mouse, Rat (predicted: Human, Pig, Sheep, Cow, Chicken, Horse)
GeneID: 1124	SWISS: P52757	Predicted MW.: 54 kDa
Target: Chimaerin 2		Subcellular Location: Cell membrane
Immunogen: KLH conjugated synthetic peptide derived from human Chimaerin 2: 251-350/468.		
Purification: affinity purified by Protein A		
Concentration: 1mg/ml		
Storage: 0.01M TBS (pH7.4) with 1% BSA, 0.02% Proclin300 and 50% Glycerol. Shipped at 4°C. Store at -20°C for one year. Avoid repeated freeze/thaw cycles.		
Background: This gene is a member of the chimerin family and encodes a protein with a phorbol-ester/DAG-type zinc finger, a Rho-GAP domain and an SH2 domain. This protein has GTPase-activating protein activity that is regulated by phospholipid binding and binding of diacylglycerol (DAG) induces translocation of the protein from the cytosol to the Golgi apparatus membrane. The protein plays a role in the proliferation and migration of smooth muscle cells. Decreased expression of this gene is associated with high-grade gliomas and breast tumors, and increased expression of this gene is associated with lymphomas. Mutations in this gene have been associated with schizophrenia in men. Alternate transcriptional splice variants, encoding different isoforms, have been characterized. [provided by RefSeq, Jul 2008]		

— VALIDATION IMAGES —

25 ug total protein per lane of various lysates
(see on figure) probed with Chimaerin 2
polyclonal antibody, unconjugated (bs-13903R)
at 1:1000 dilution and 4°C overnight incubation.
Followed by conjugated secondary antibody
incubation at r.t. for 60 min.