

bsm-51330M**[Primary Antibody]****S100A2 Mouse mAb****BioSS**
ANTIBODIES

www.bioss.com.cn

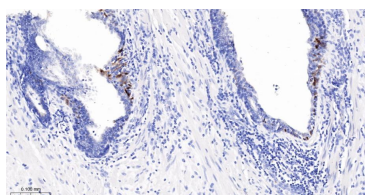
sales@bioss.com.cn

techsupport@bioss.com.cn

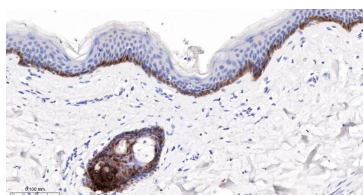
400-901-9800

— DATASHEET —

Host: Mouse	Isotype: IgG1	Applications: IHC-P (1:50-200) IHC-F (1:50-200) IF (1:50-200) Reactivity: Human Predicted MW.: 11 kDa Subcellular Location: Cytoplasm
Clonality: Monoclonal	CloneNo.: 7G5	
GeneID: 6273	SWISS: P29034.3	
Target: S100A2		
Purification: affinity purified by Protein A		
Concentration: 1mg/ml		
Storage: 0.01M TBS (pH7.4) with 1% BSA, 0.02% Proclin300 and 50% Glycerol. Shipped at 4°C. Store at -20°C for one year. Avoid repeated freeze/thaw cycles.		
Background: The protein encoded by this gene is a member of the S100family of proteins containing 2 EF-hand calcium-binding motifs.S100 proteins are localized in the cytoplasm and/or nucleus of a wide range of cells, and involved in the regulation of a number of cellular processes such as cell cycle progression and differentiation. S100 genes include at least 13 members which are located as a cluster on chromosome 1q21. This protein may have a tumor suppressor function. Chromosomal rearrangements and altered expression of this gene have been implicated in breast cancer.		

— VALIDATION IMAGES —

Paraformaldehyde-fixed, paraffin embedded Human Prostate; Antigen retrieval by boiling in sodium citrate buffer (pH6.0) for 15 min; The section was incubated with S100A2 Monoclonal Antibody, Unconjugated (bsm-51330M) at 1:200 overnight at 4°C, followed by conjugation to the bs-40296G-HRP and DAB (C-0010) staining.



Paraformaldehyde-fixed, paraffin embedded Human Skin; Antigen retrieval by boiling in sodium citrate buffer (pH6.0) for 15 min; The section was incubated with S100A2 Monoclonal Antibody, Unconjugated (bsm-51330M) at 1:200 overnight at 4°C, followed by conjugation to the bs-40296G-HRP and DAB (C-0010) staining.

— SELECTED CITATIONS —

- **[IF=2.5]** Ying Peng, et al. S100A2 upregulates GLUT1 expression to promote glycolysis in the progression of nasopharyngeal carcinoma. HISTOL HISTOPATHOL. 2024 Jun 11:18778 IF ;Human. 38940398