

bs-1955R**[Primary Antibody]****MCP1 Rabbit pAb****Bioss**
ANTIBODIES

www.bioss.com.cn

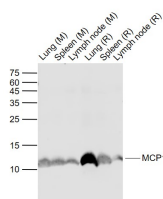
sales@bioss.com.cn

techsupport@bioss.com.cn

400-901-9800

— DATASHEET —

Host: Rabbit Clonality: Polyclonal GeneID: 6347 Target: MCP1 Immunogen: KLH conjugated synthetic peptide derived from human MCP-1: 24-99/99. Purification: affinity purified by Protein A Concentration: 1mg/ml Storage: 0.01M TBS (pH7.4) with 1% BSA, 0.02% Proclin300 and 50% Glycerol. Shipped at 4°C. Store at -20°C for one year. Avoid repeated freeze/thaw cycles. Background: Chemotactic factor that attracts monocytes and basophils but not neutrophils or eosinophils. Augments monocyte anti-tumor activity. Has been implicated in the pathogenesis of diseases characterized by monocytic infiltrates, like psoriasis, rheumatoid arthritis or atherosclerosis. May be involved in the recruitment of monocytes into the arterial wall during the disease process of atherosclerosis. Monomer or homodimer; in equilibrium. Binds to CCR2 and CCR4. Is tethered on endothelial cells by glycosaminoglycan (GAG) side chains of proteoglycans. Processing at the N-terminus can regulate receptor and targetcell selectivity. Deletion of the N-terminal residue converts it from an activator of basophil to an eosinophil chemoattractant. Genetic variations in CCL2 determine Mycobacterium tuberculosis susceptibility. Belongs to the intercrine beta (chemokine CC) family. The MCP-1 (the monocyte chemotactic protein1) has many pits that regulates the function toward sex to turn to record the factor, it can induce to have relation with inflammation with the immunity various genes turn to record. The immunity MCP-1 set turns the male signal to mainly locate the afterbirth syrup inside.	Isotype: IgG SWISS: P13500 Applications: WB (1:500-2000) ELISA (1:5000-10000) Reactivity: Mouse, Rat (predicted: Human) Predicted MW.: 11 kDa Subcellular Location: Secreted
--	---

— VALIDATION IMAGES —

Sample: Lane 1: Lung (Mouse) Lysate at 40 ug
Lane 2: Spleen (Mouse) Lysate at 40 ug Lane 3:
Lymph node (Mouse) Lysate at 40 ug Lane 4:
Lung (Rat) Lysate at 40 ug Lane 5: Spleen (Rat)
Lysate at 40 ug Lane 6: Lymph node (Rat) Lysate
at 40 ug Primary: Anti-MCP1 (bs-1955R) at 1/1000
dilution Secondary: IRDye800CW Goat Anti-
Rabbit IgG at 1/20000 dilution Predicted band
size: 11 kD Observed band size: 11 kD

— SELECTED CITATIONS —

- **[IF=10.02]** Su, Xiaomin, et al. "LRRC19 expressed in the kidney induces TRAF2/6-mediated signals to prevent infection

Important Note: This product as supplied is intended for research use only, not for use in human, therapeutic or diagnostic applications.

- by uropathogenic bacteria." Nature Communications 5 (2014). IHC ;="Mouse". 25026888
- **[IF=7.419]** Hirana Kugo. et al. Tricaprin can prevent the development of AAA by attenuating aortic degeneration. BIOMED PHARMACOTHER. 2023 Apr;160:114299 IHC ;Rat. 36724640
 - **[IF=6.268]** Li, Yuchen. et al. Porcine intraepithelial lymphocytes undergo migration and produce an antiviral response following intestinal virus infection. Commun Biol. 2022 Mar;5(1):1-16 IF ;Piglets. 35318455
 - **[IF=6.1]** Linxu Wu. et al. Mechanistic role of RND3-regulated IL33/ST2 signaling on cardiomyocyte senescence. LIFE SCI. 2024 Jul;348:122701 WB ;Rat. 38724005
 - **[IF=4.8]** Haipiao Huang. et al. Jian-Pi-Yi-Shen formula ameliorates renal fibrosis-induced anemia in rats with chronic kidney disease. J ETHNOPHARMACOL. 2024 Dec;335:118607 WB ;Rat. 39069029