

**bs-1944R****[ Primary Antibody ]****Bioss**  
ANTIBODIES

www.bioss.com.cn

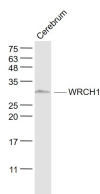
sales@bioss.com.cn

techsupport@bioss.com.cn

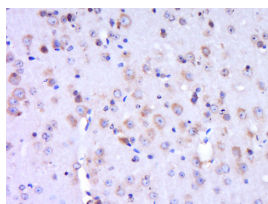
400-901-9800

**WRCH1 Rabbit pAb****— DATASHEET —**

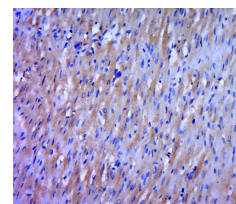
<b>Host:</b> Rabbit	<b>Isotype:</b> IgG	<b>Applications:</b> <b>WB</b> (1:500-2000)
<b>Clonality:</b> Polyclonal		<b>IHC-P</b> (1:100-500)
<b>GeneID:</b> 58480	<b>SWISS:</b> Q7L0Q8	<b>IHC-F</b> (1:100-500)
<b>Target:</b> WRCH1		<b>IF</b> (1:100-500)
<b>Immunogen:</b> KLH conjugated synthetic peptide derived from human WRCH-1: 151-258/258.		<b>Reactivity:</b> Mouse, Rat (predicted: Human, Rabbit, Cow)
<b>Purification:</b> affinity purified by Protein A		<b>Predicted MW.:</b> 29 kDa
<b>Concentration:</b> 1mg/ml		<b>Subcellular Location:</b> Cell membrane ,Cytoplasm
<b>Storage:</b> 0.01M TBS (pH7.4) with 1% BSA, 0.02% Proclin300 and 50% Glycerol. Shipped at 4°C. Store at -20°C for one year. Avoid repeated freeze/thaw cycles.		
<b>Background:</b> The WRCH1 protein is a member of the Rho family of GTPases. This protein can activate PAK1 and JNK1, and can induce filopodium formation and stress fiber dissolution. It may also mediate the effects of WNT1 signaling in the regulation of cell morphology, cytoskeletal organization, and cell proliferation.		

**— VALIDATION IMAGES —**

Sample: Cerebrum (Mouse) Lysate at 40 ug  
 Primary: Anti- WRCH1 (bs-1944R) at 1/1000  
 dilution Secondary: IRDye800CW Goat Anti-  
 Rabbit IgG at 1/20000 dilution Predicted band  
 size: 29 kD Observed band size: 29 kD



Paraformaldehyde-fixed, paraffin embedded  
 (mouse brain tissue); Antigen retrieval by boiling  
 in sodium citrate buffer (pH6.0) for 15min; Block  
 endogenous peroxidase by 3% hydrogen  
 peroxide for 20 minutes; Blocking buffer (normal  
 goat serum) at 37°C for 30min; Antibody  
 incubation with (WRCH1) Polyclonal Antibody,  
 Unconjugated (bs-1944R) at 1:400 overnight at  
 4°C, followed by a conjugated secondary  
 (sp-0023) for 20 minutes and DAB staining.



Paraformaldehyde-fixed, paraffin embedded (rat  
 heart tissue); Antigen retrieval by boiling in  
 sodium citrate buffer (pH6.0) for 15min; Block  
 endogenous peroxidase by 3% hydrogen  
 peroxide for 20 minutes; Blocking buffer (normal  
 goat serum) at 37°C for 30min; Antibody  
 incubation with (WRCH1) Polyclonal Antibody,  
 Unconjugated (bs-1944R) at 1:400 overnight at  
 4°C, followed by a conjugated secondary  
 (sp-0023) for 20 minutes and DAB staining.