

**bs-1942R****[ Primary Antibody ]****ZAP70 Rabbit pAb****BioSS**  
**ANTIBODIES**

www.bioss.com.cn

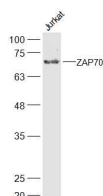
sales@bioss.com.cn

techsupport@bioss.com.cn

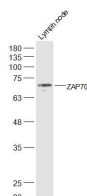
400-901-9800

**— DATASHEET —**

<b>Host:</b> Rabbit <b>Clonality:</b> Polyclonal <b>GeneID:</b> 7535 <b>Target:</b> ZAP70 <b>Immunogen:</b> KLH conjugated synthetic peptide derived from human ZAP70: 535-547/619. <b>Purification:</b> affinity purified by Protein A <b>Concentration:</b> 1mg/ml <b>Storage:</b> 0.01M TBS (pH7.4) with 1% BSA, 0.02% Proclin300 and 50% Glycerol. Shipped at 4°C. Store at -20°C for one year. Avoid repeated freeze/thaw cycles. <b>Background:</b> This gene encodes an enzyme belonging to the protein tyrosine kinase family, and it plays a role in T-cell development and lymphocyte activation. This enzyme, which is phosphorylated on tyrosine residues upon T-cell antigen receptor (TCR) stimulation, functions in the initial step of TCR-mediated signal transduction in combination with the Src family kinases, Lck and Fyn. This enzyme is also essential for thymocyte development. Mutations in this gene cause selective T-cell defect, a severe combined immunodeficiency disease characterized by a selective absence of CD8-positive T-cells. Two transcript variants that encode different isoforms have been found for this gene. [provided by RefSeq, Jul 2008].	<b>Isotype:</b> IgG <b>SWISS:</b> P43403	<b>Applications:</b> WB (1:500-2000) <b>Reactivity:</b> Human, Mouse (predicted: Rat, Rabbit, Pig, Cow, Chicken, Dog, GuineaPig, Horse) <b>Predicted MW.:</b> 68 kDa <b>Subcellular Location:</b> Cell membrane ,Cytoplasm
---	---	--

**— VALIDATION IMAGES —**

Sample: Jurkat(Human) Cell Lysate at 30 ug  
Primary: Anti-ZAP70 (bs-1942R) at 1/500 dilution  
Secondary: IRDye800CW Goat Anti-Rabbit IgG at 1/20000 dilution Predicted band size: 68 kD  
Observed band size: 68 kD



Sample: Lymph node (Mouse) Lysate at 40 ug  
Primary: Anti-ZAP70 (bs-1942R) at 1/500 dilution  
Secondary: IRDye800CW Goat Anti-Rabbit IgG at 1/20000 dilution Predicted band size: 68 kD  
Observed band size: 68 kD