

**bs-1940R****[ Primary Antibody ]**

**Bioss**  
ANTIBODIES

www.bioss.com.cn

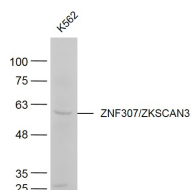
sales@bioss.com.cn

techsupport@bioss.com.cn

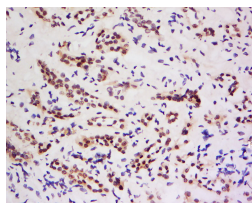
400-901-9800

**ZNF307/ZKSCAN3 Rabbit pAb****DATASHEET**

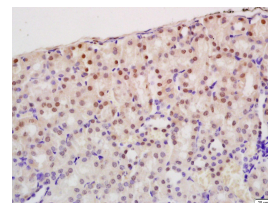
<b>Host:</b> Rabbit	<b>Isotype:</b> IgG	<b>Applications:</b> WB (1:500-2000) <b>IHC-P</b> (1:100-500) <b>IHC-F</b> (1:100-500) <b>IF</b> (1:100-500) <b>Flow-Cyt</b> (2ug/Test) <b>ICC/IF</b> (1:100)  <b>Reactivity:</b> Human, Mouse (predicted: Rat, Rabbit, Cow, Dog, Horse)  <b>Predicted MW.:</b> 62 kDa  <b>Subcellular Location:</b> Nucleus
<b>Clonality:</b> Polyclonal		
<b>GeneID:</b> 387032	<b>SWISS:</b> Q969J2	
<b>Target:</b> ZNF307/ZKSCAN3		
<b>Immunogen:</b> KLH conjugated synthetic peptide derived from human ZNF307: 351-450/545.		
<b>Purification:</b> affinity purified by Protein A		
<b>Concentration:</b> 1mg/ml		
<b>Storage:</b> 0.01M TBS (pH7.4) with 1% BSA, 0.02% Proclin300 and 50% Glycerol. Shipped at 4°C. Store at -20°C for one year. Avoid repeated freeze/thaw cycles.		
<b>Background:</b> ZNF307 contains 1 SCAN box domain, 1 KRAB domain and 7 C2H2-type zinc fingers. It belongs to the Krueppel C2H2-type zinc-finger protein family and may be involved in transcriptional regulation. [SUBCELLULAR LOCATION] Nucleus. Expressed in adult heart, brain, placenta, lung and kidney, but not in adult liver and skeletal muscle. In 17-day old embryo, detected in liver, skeletal muscle, brain, heart and small intestine.		

**VALIDATION IMAGES**

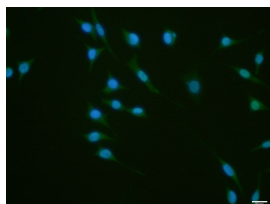
Sample: K562(Human) Cell Lysate at 40 ug  
Primary: Anti-ZNF307/ZKSCAN3 (bs-1940R) at 1/300 dilution Secondary: IRDye800CW Goat Anti-Rabbit IgG at 1/20000 dilution Predicted band size: 62 kD Observed band size: 62 kD



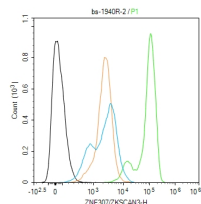
Tissue/cell: human kidney tissue; 4% Paraformaldehyde-fixed and paraffin-embedded; Antigen retrieval: citrate buffer (0.01M, pH 6.0), Boiling bathing for 15min; Block endogenous peroxidase by 3% Hydrogen peroxide for 30min; Blocking buffer (normal goat serum, C-0005) at 37°C for 20 min; Incubation: Anti-ZNF307 Polyclonal Antibody, Unconjugated(bs-1940R) 1:200, overnight at 4°C, followed by conjugation to the secondary antibody(SP-0023) and DAB(C-0010) staining



Tissue/cell: mouse kidney tissue; 4% Paraformaldehyde-fixed and paraffin-embedded; Antigen retrieval: citrate buffer (0.01M, pH 6.0), Boiling bathing for 15min; Block endogenous peroxidase by 3% Hydrogen peroxide for 30min; Blocking buffer (normal goat serum, C-0005) at 37°C for 20 min; Incubation: Anti-ZNF307 Polyclonal Antibody, Unconjugated(bs-1940R) 1:200, overnight at 4°C, followed by conjugation to the secondary antibody(SP-0023) and DAB(C-0010) staining



SH-SY5Y cell; 4% Paraformaldehyde-fixed; Triton X-100 at room temperature for 20 min; Blocking buffer (normal goat serum, C-0005) at 37°C for 20 min; Antibody incubation with (ZNF307/ZKSCAN3) polyclonal Antibody, Unconjugated (bs-1940R) 1:100, 90 minutes at 37°C; followed by a conjugated Goat Anti-Rabbit



Blank control (black line) :SH-SY5Y. Primary Antibody (green line): Rabbit Anti-ZNF307/ZKSCAN3 antibody (bs-1940R) Dilution:2ug/Test; Secondary Antibody (white blue line) : Goat anti-rabbit IgG-AF488 Dilution: 0.5ug/Test. Isotype control (orange line) : Normal Rabbit IgG Protocol The cells were fixed

Important Note: This product as supplied is intended for research use only, not for use in human, therapeutic or diagnostic applications.

IgG antibody at 37°C for 90 minutes, DAPI (blue, C02-04002) was used to stain the cell nuclei.

with 4% PFA (10min at room temperature) and then permeabilized with 90% ice-cold methanol for 20 min at -20°C. The cells were then incubated in 5%BSA to block non-specific protein-protein interactions for 30 min at room temperature. Cells stained with Primary Antibody for 30 min at room temperature. The secondary antibody used for 40 min at room temperature. Acquisition of 20,000 events was performed.