

**bs-11388R****[ Primary Antibody ]****AAMP Rabbit pAb****Bioss**  
ANTIBODIES

www.bioss.com.cn

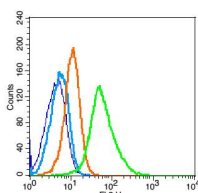
sales@bioss.com.cn

techsupport@bioss.com.cn

400-901-9800

**DATASHEET**

<b>Host:</b> Rabbit	<b>Isotype:</b> IgG	<b>Applications:</b> Flow-Cyt (1µg/Test)
<b>Clonality:</b> Polyclonal		<b>Reactivity:</b> Human (predicted: Mouse, Rat, Rabbit, Pig, Cow, Dog)
<b>GeneID:</b> 14	<b>SWISS:</b> Q13685	
<b>Target:</b> AAMP		<b>Predicted MW.:</b> 47 kDa
<b>Immunogen:</b> KLH conjugated synthetic peptide derived from human AAMP: 76-125/434.		<b>Subcellular Location:</b> Cell membrane ,Cytoplasm
<b>Purification:</b> affinity purified by Protein A		
<b>Concentration:</b> 1mg/ml		
<b>Storage:</b> 0.01M TBS (pH7.4) with 1% BSA, 0.02% Proclin300 and 50% Glycerol. Shipped at 4°C. Store at -20°C for one year. Avoid repeated freeze/thaw cycles.		
<b>Background:</b> AAMP is a 434 amino acid immunoglobulin-like protein that contains 8 WD repeats. Expressed in endothelial cells, cytotrophoblasts and blood vessels, AAMP is thought to have a heparin-sensitive role in cell adhesion and cell migration. AAMP is strongly expressed in poorly differentiated colon adenocarcinoma cells, suggesting a role for AAMP in tumor progression.		

**VALIDATION IMAGES**

Blank control(blue): Raji(fixed with 2% paraformaldehyde (10 min)). Primary Antibody:Rabbit Anti-AAMP antibody(bs-11388R), Dilution: 1µg in 100 µL 1X PBS containing 0.5% BSA; Isotype Control Antibody: Rabbit IgG(orange) ,used under the same conditions ); Secondary Antibody: Goat anti-rabbit IgG-PE(white blue), Dilution: 1:200 in 1 X PBS containing 0.5% BSA.