

## Carboxypeptidase H Rabbit pAb

Catalog Number: bs-6478R

Target Protein: Carboxypeptidase H

Concentration: 1mg/ml

Form: Liquid

Host: Rabbit

Clonality: Polyclonal

Isotype: IgG

Applications: WB (1:500-2000)

Reactivity: Human, Mouse, Rat (predicted:Rabbit, Pig, Cow, Chicken, Dog, Horse)

Predicted MW: 48 kDa

Entrez Gene: 1363

Swiss Prot: P16870

Source: KLH conjugated synthetic peptide derived from human Carboxypeptidase E: 201-300/476.

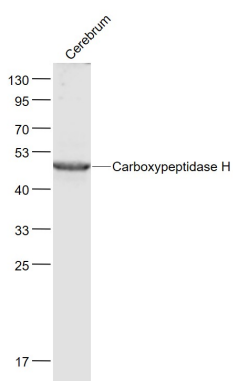
Purification: affinity purified by Protein A

Storage: 0.01M TBS (pH7.4) with 1% BSA, 0.02% Proclin300 and 50% Glycerol.

Shipped at 4°C. Store at -20°C for one year. Avoid repeated freeze/thaw cycles.

Background: Removes residual C-terminal Arg or Lys remaining after initial endoprotease cleavage during prohormone processing. Processes proinsulin.

### VALIDATION IMAGES



Sample: Cerebrum (Rat) Lysate at 40 ug  
Primary: Anti- Carboxypeptidase H (bs-6478R) at 1/1000 dilution  
Secondary: IRDye800CW Goat Anti-Rabbit IgG at 1/20000 dilution  
Predicted band size: 48 kD  
Observed band size: 48 kD