

**bs-4894R****[ Primary Antibody ]****CHST1 Rabbit pAb****Bioss**  
**ANTIBODIES**

www.bioss.com.cn

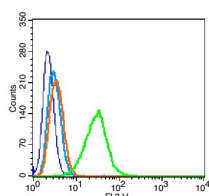
sales@bioss.com.cn

techsupport@bioss.com.cn

400-901-9800

**— DATASHEET —**

<p><b>Host:</b> Rabbit</p> <p><b>Clonality:</b> Polyclonal</p> <p><b>GeneID:</b> 8534</p> <p><b>Target:</b> CHST1</p> <p><b>Immunogen:</b> KLH conjugated synthetic peptide derived from human CHST1: 251-350/411.</p> <p><b>Purification:</b> affinity purified by Protein A</p> <p><b>Concentration:</b> 1mg/ml</p> <p><b>Storage:</b> 0.01M TBS (pH7.4) with 1% BSA, 0.02% Proclin300 and 50% Glycerol. Shipped at 4°C. Store at -20°C for one year. Avoid repeated freeze/thaw cycles.</p> <p><b>Background:</b> Catalyzes the transfer of sulfate to position 6 of galactose residues of keratan. It has a preference for sulfating keratan sulfate, but it also transfers sulfate to the unsulfated polymer. The sulfotransferase activity on sialyl LacNAc structures is much higher than the corresponding desialylated substrate, and only internal galactose residues are sulfated. It also may function in the sulfation of sialyl N-acetyllactosamine oligosaccharide chains attached to glycoproteins. It participates in biosynthesis of selectin ligands. Selectin ligands are present in high endothelial cells (HEVs) and play a central role in lymphocyte homing at sites of inflammation. Aggrecan is the major proteoglycan of human articular cartilage. The core protein is substituted by a number of keratan sulfate and chondroitin sulfate glycosaminoglycan chains. Whereas chondroitin sulfate is widely distributed throughout the body, keratan sulfate is primarily expressed in cartilage (joints, trachea, intervertebral discs) and cornea.</p>	<p><b>Isotype:</b> IgG</p> <p><b>SWISS:</b> O43916</p> <p><b>Applications:</b> Flow-Cyt (1µg/Test)</p> <p><b>Reactivity:</b> Rat (predicted: Human, Mouse, Rabbit, Pig, Cow, Chicken, Dog, Horse)</p> <p><b>Predicted MW.:</b> 45 kDa</p> <p><b>Subcellular Location:</b> Cell membrane ,Cytoplasm</p>
--	--

**— VALIDATION IMAGES —**

Blank control(blue):RSC96 cells(fixed with 2% paraformaldehyde (10 min) , then permeabilized with 90% ice-cold methanol for 30 min on ice).

Primary Antibody:Rabbit Anti-Keratan Sulfate antibody(bs-4894R), Dilution: 1µg in 100 µL 1X PBS containing 0.5% BSA; Isotype Control Antibody: Rabbit IgG(orange) ,used under the same conditions ); Secondary Antibody: Goat anti-rabbit IgG-PE(white blue), Dilution: 1:200 in 1 X PBS containing 0.5% BSA.