

bs-10012R**[Primary Antibody]****phospho-E2F1 (Ser337) Rabbit pAb****BioSS**
ANTIBODIES

www.bioss.com.cn

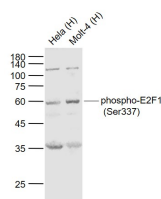
sales@bioss.com.cn

techsupport@bioss.com.cn

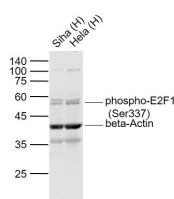
400-901-9800

— DATASHEET —

Host: Rabbit	Isotype: IgG	Applications: WB (1:500-2000)
Clonality: Polyclonal		Reactivity: Human (predicted: Mouse, Rat, Pig, Cow, Dog, GuineaPig, Horse)
GeneID: 1869	SWISS: Q01094	
Target: phospho-E2F1 (Ser337)		Predicted MW.: 46 kDa
Immunogen: KLH conjugated Synthesised phosphopeptide derived from human E2F1 around the phosphorylation site of Ser337: L(p-S)PL.		Subcellular Location: Nucleus
Purification: affinity purified by Protein A		
Concentration: 1mg/ml		
Storage: 0.01M TBS (pH7.4) with 1% BSA, 0.02% Proclin300 and 50% Glycerol. Shipped at 4°C. Store at -20°C for one year. Avoid repeated freeze/thaw cycles.		
Background: E2F's are DNA binding proteins, which associate with negative regulators, such as the retinoblastoma p107 protein, resulting in an altered rate of gene transcription. The E2F proteins contain several evolutionally conserved domains found in most members of the family. These domains include a DNA binding domain, a dimerization domain which determines interaction with the differentiation regulated transcription factor proteins (DP), a transactivation domain enriched in acidic amino acids, and a tumor suppressor protein association domain which is embedded within the transactivation domain. This protein and another 2 members, E2F2 and E2F3, have an additional cyclin binding domain. E2F1 is proposed to be involved in several cellular processes that range from tumor suppressor, cell progression and oncogenesis. E2F1 overexpression can also drive cells into apoptosis.		

— VALIDATION IMAGES —

Sample: Lane 1: HeLa (Human) Cell Lysate at 30 ug
Lane 2: Molt-4 (Human) Cell Lysate at 30 ug
Primary: Anti-phospho-E2F1 (Ser337) (bs-10012R) at 1/1000 dilution
Secondary: IRDye800CW Goat Anti-Rabbit IgG at 1/20000 dilution
Predicted band size: 55-60 kD
Observed band size: 55-60 kD



Sample: Lane 1: SiHa (Human) Cell Lysate at 30 ug
Lane 2: HeLa (Human) Cell Lysate at 30 ug
Primary: Anti-phospho-E2F1 (Ser337) (bs-10012R) at 1/1000 dilution
Secondary: Anti-beta-Actin (bs-0061R) at 1/2000 dilution
IRDye800CW Goat Anti-Rabbit IgG at 1/20000 dilution
Predicted band size: 55-60 kD
Observed band size: 55-60 kD