

bs-9567R**[Primary Antibody]****ANT1+ANT2+ANT3+ANT4 Rabbit pAb****Bioss**
ANTIBODIES

www.bioss.com.cn

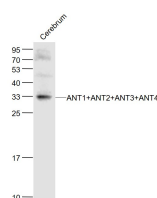
sales@bioss.com.cn

techsupport@bioss.com.cn

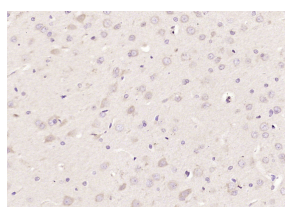
400-901-9800

— DATASHEET —

Host: Rabbit Clonality: Polyclonal GeneID: 291 Target: ANT1+ANT2+ANT3+ANT4 Immunogen: KLH conjugated synthetic peptide derived from human ANT1/2/3/4: 51-150/298. Purification: affinity purified by Protein A Concentration: 1mg/ml Storage: 0.01M TBS (pH7.4) with 1% BSA, 0.02% Proclin300 and 50% Glycerol. Shipped at 4°C. Store at -20°C for one year. Avoid repeated freeze/thaw cycles. Background: Defects in SLC25A4 are a cause of progressive external ophthalmoplegia with mitochondrial DNA deletions autosomal dominant type 2 (PEOA2) [MIM:609283]. Progressive external ophthalmoplegia is characterized by progressive weakness of ocular muscles and levator muscle of the upper eyelid. In a minority of cases, it is associated with skeletal myopathy, which causes abnormal fatigability and even permanent muscle weakness. Ragged-red fibers and atrophy are found on muscle biopsy. A large proportion of chronic ophthalmoplegias are associated with other symptoms, leading to a multisystemic pattern of this disease. Additional symptoms are variable, and may include cataracts, hearing loss, sensory axonal neuropathy, ataxia, depression, hypogonadism, and parkinsonism.	Isotype: IgG SWISS: P12235 Applications: WB (1:500-2000) IHC-P (1:100-500) IHC-F (1:100-500) IF (1:100-500) Reactivity: Mouse, Rat (predicted: Human, Rabbit, Horse) Predicted MW.: 33 kDa Subcellular Location: Cell membrane ,Cytoplasm
--	--

— VALIDATION IMAGES —

Sample: Cerebrum (Mouse) Lysate at 40 ug
Primary: Anti-ANT1+ANT2+ANT3+ANT4 (bs-9567R) at 1/1000 dilution
Secondary: IRDye800CW Goat Anti-Rabbit IgG at 1/20000 dilution
Predicted band size: 33 kD
Observed band size: 33 kD



Paraformaldehyde-fixed, paraffin embedded (rat brain); Antigen retrieval by boiling in sodium citrate buffer (pH6.0) for 15min; Block endogenous peroxidase by 3% hydrogen peroxide for 20 minutes; Blocking buffer (normal goat serum) at 37°C for 30min; Antibody incubation with (ANT1+ANT2+ANT3+ANT4) Polyclonal Antibody, Unconjugated (bs-9567R) at 1:200 overnight at 4°C, followed by operating according to SP Kit(Rabbit) (sp-0023) instructions and DAB staining.

— SELECTED CITATIONS —

- **[IF=8.469]** Chen, Yan-Jie. et al. An integrated bioinformatic investigation of mitochondrial solute carrier family 25 (SLC25) in colon cancer followed by preliminary validation of member 5 (SLC25A5) in tumorigenesis. Cell Death Dis. 2022 Mar;13(3):1-16 IHC ;Human. 35288533

Important Note: This product as supplied is intended for research use only, not for use in human, therapeutic or diagnostic applications.

- **[IF=1.5]** Xue Liu. et al. Cuproptosis-related genes signature could predict prognosis and the response of immunotherapy in cervical cancer. translational cancer research. 2025 Jan 31;14(1):129-140. IHC ;Human. 39974424